

The Development registered under title GLA242924 and plots 4, 36 to 46, 49 to 53, 67, 68, 80, 81, 88, 90, 91, 93 to 96 and 113 within have been DPA approved.

The Keeper - 14 January 2025

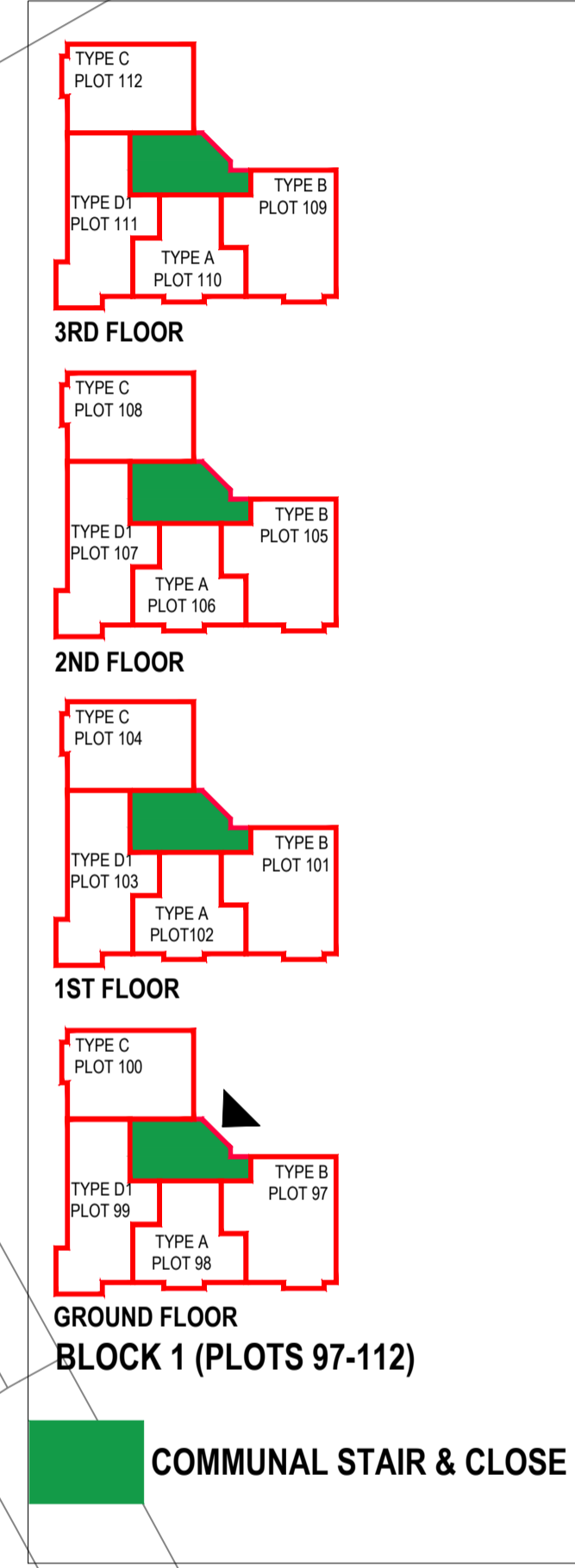
Keeper for the Registers of Scotland

- A** SHARED DRIVEWAY ACCESS PLOTS 12 & 13.
- B** SHARED DRIVEWAY ACCESS PLOTS 54 & 55.
- C** SHARED PARKING COURT PLOTS 97 - 112.
- D** SHARED PARKING COURT PLOTS 5 - 10 & 23-26.
- E** SHARED ACCESS PATH PLOTS 38 & 39
- F** SHARED ACCESS PATH PLOTS 5 - 9
- G** SHARED ACCESS FOOTPATH PLOTS 5-10 & 23-26.
- H** SHARED ACCESS PATH PLOTS 50 - 53 & 113.
- I** SHARED PARKING COURT & TELECOM MAST ACCESS PLOTS 50 - 53 & 113.
- J** PUBLIC OPEN SPACE
- K** AFFORDABLE UNITS PHASE 1 - PLOTS 23 - 26
- L** AFFORDABLE UNITS PHASE 2 - PLOTS 27 - 30
- M** AFFORDABLE UNITS PHASE 3 - PLOTS 31 - 34

- N** OPEN SPACE (FACTORED)
- O** PROSPECTIVELY ADOPTABLE ROAD
- P** PROSPECTIVELY ADOPTABLE FOOTPATH
- Q** PROSPECTIVELY ADOPTABLE SERVICE STRIP
- R** PROSPECTIVELY ADOPTABLE SERVICE STRIP CROSS OVER

AMENDMENTS

| Issue | Date | Detail |
|-------|------------|----------------------------------------------------------------------------------------------------------------------------------------------------------------------------------|
| H | 09.01.2025 | Remix - Out - Pinehurst, Moray & 2 Sandhills. In - 5 Hanburys - O'all mix increased by 1 unit (Plot 113) Retaining wall added to phone mast boundary. legend amended to suit. TR |
| G | 06.12.2023 | Disabled bay marking amended. TR |
| F | 30.11.2023 | Parking court serving the flatted block revised. TR |
| E | 28.03.2023 | Footpath to private parking court (plots 5-10 & 23-26) now indicated. TR |
| D | 02.06.2023 | Plots 52 & 53 numbers removed and tidy up as per lawyers comments. TR |
| C | 24.10.2022 | Affordable plots - fee lines added. TR |
| B | 25.07.2022 | Plots 5-10 & 61-63, feu lines altered. TR |
| A | 04.05.2022 | Amended as per Eng's drawing. TR |



63.4m

Bellway
 Hamilton Business Park
 Caird Street
 Hamilton ML3 0QA
 Telephone 01698 477440
 Fax 01698 477441
 www.bellway.co.uk

Project
Gartfery Road
Moodiesburn

Drawing
DPA Plan

Scale Drawn By Checked
1:500@A1 tr
 Date Drawing No
15.10.2021 MN/DPA/01 H

