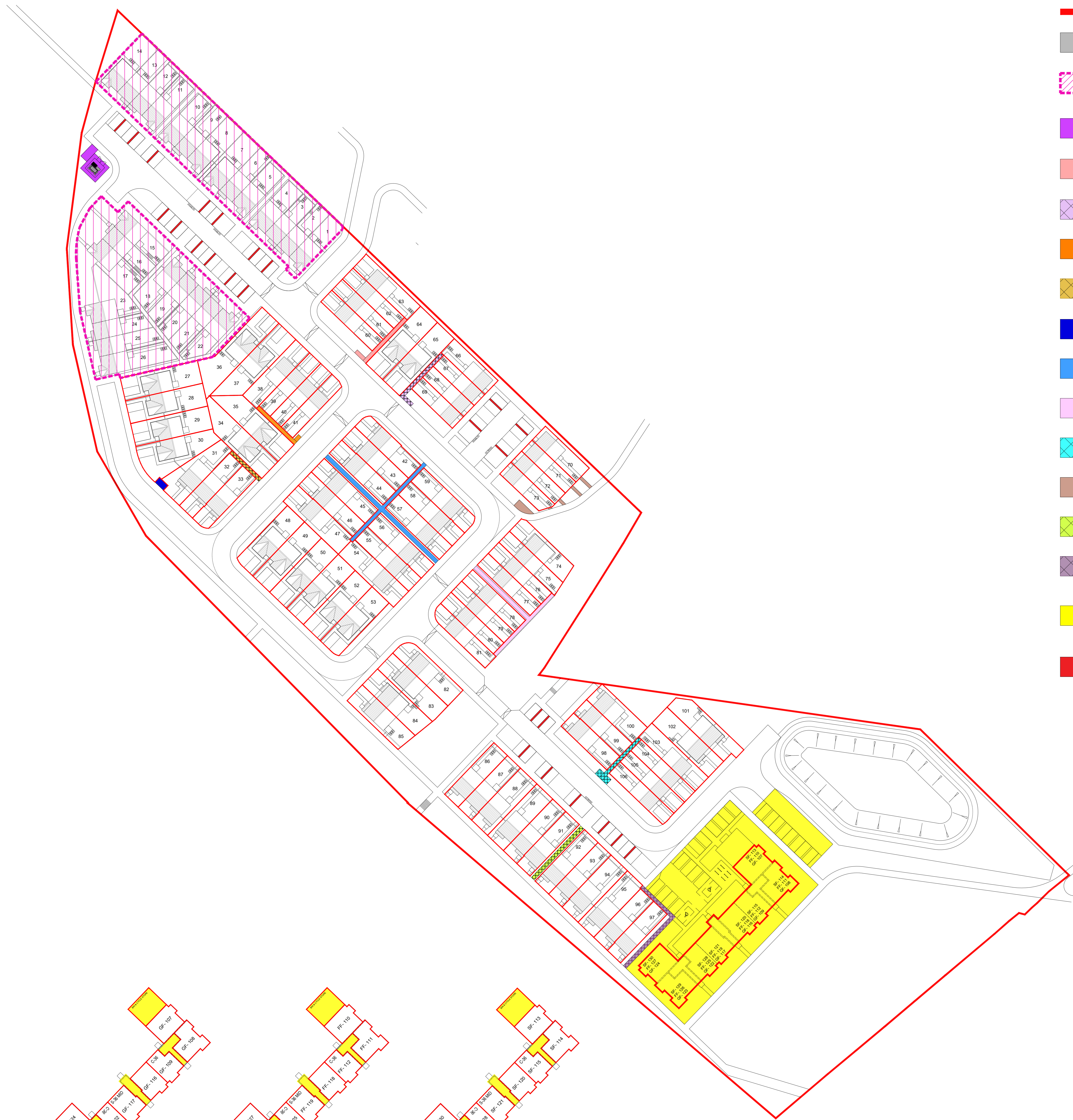
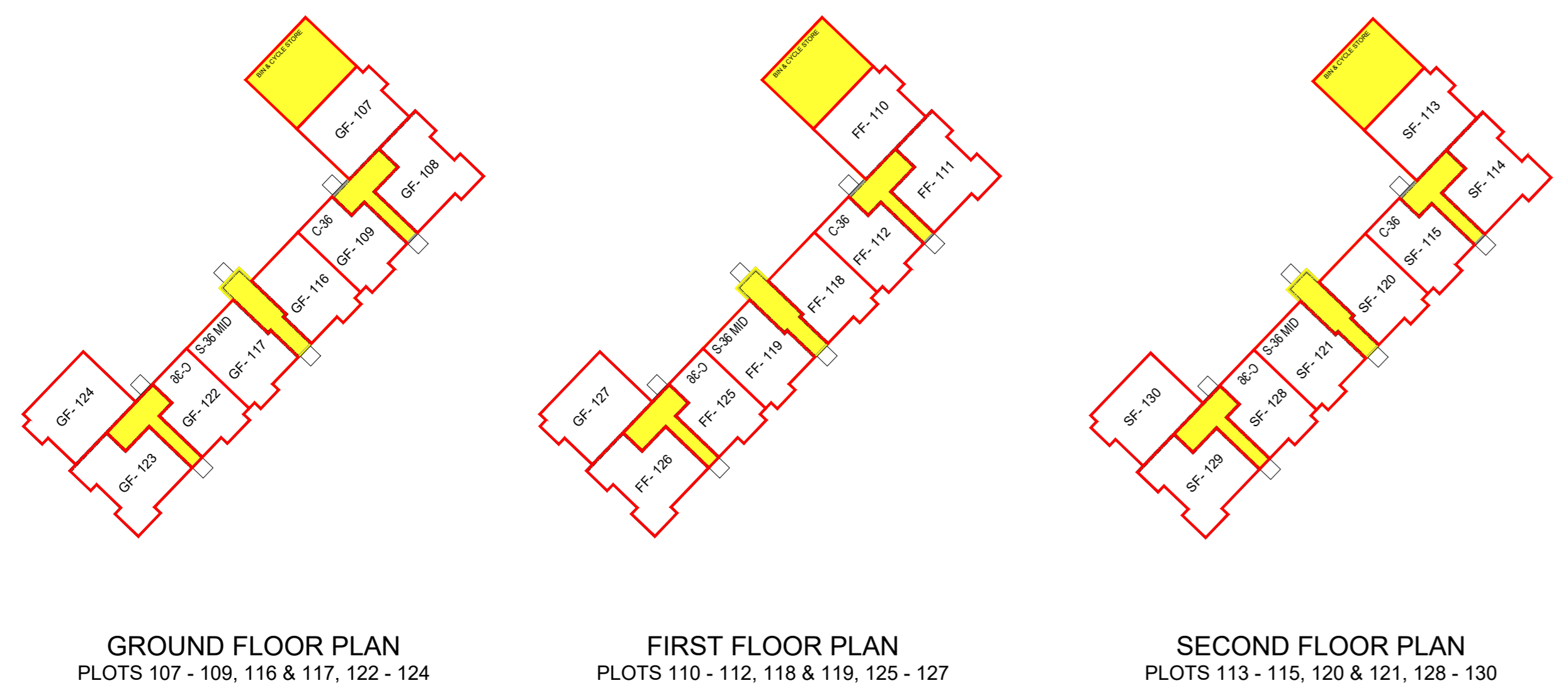
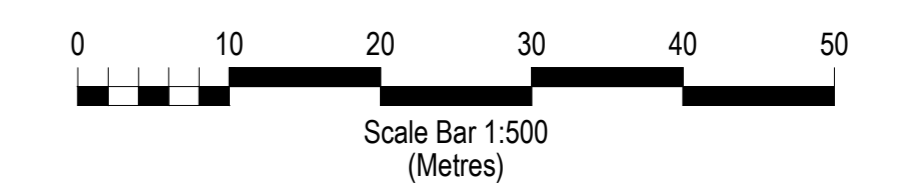


LEGEND

-  Site Boundary
-  Roadways, footpaths and parking adopted and maintained by City of Edinburgh Council Roads Department. (Grey)
-  Housing, soft landscaping, and hardstanding adopted & maintained by Housing Association. Plots 1-26 (Pink Diagonal Hatch & Pink Dashed Boundary)
-  Substation and associated parking to be adopted and maintained by the utility provider (light purple)
-  Private hardstanding area shared between plots 63-60 maintained by factor, with wayleave access as a service strip, sewer wayleave or fibre cable wayleave. (Peach)
-  Private hardstanding area shared between plots 66-69 maintained by factor, with wayleave access as a service strip, sewer wayleave or fibre cable wayleave. (Green)
-  Private hardstanding area shared between plots 38-41 maintained by factor, with wayleave access as a service strip, sewer wayleave or fibre cable wayleave. (Orange)
-  Private hardstanding area shared between plots 31-33 maintained by factor with wayleave access as a service strip, sewer wayleave or fibre cable wayleave. (Turquoise Hatch)
-  Private hardstanding area shared between plots 27-30 maintained by factor with wayleave access as a service strip, sewer wayleave or fibre cable wayleave. (Dark Blue)
-  Private hardstanding area shared between plots 42-47 & 54-59 maintained by factor with wayleave access as a service strip, sewer wayleave or fibre cable wayleave. (Blue)
-  Private hardstanding area shared between plots 75 & 81 maintained by factor with wayleave access as a service strip, sewer wayleave or fibre cable wayleave. (Magenta)
-  Private hardstanding + designated parking area shared between plots 98-100 & 103-106 maintained by factor with wayleave access as a service strip, sewer wayleave or fibre cable wayleave (Cyan)
-  Private hardstanding shared between plots 70-73 maintained by factor with wayleave access as a service strip, sewer wayleave or fibre cable wayleave (Brown)
-  Private hardstanding shared between plots 86-97 maintained by factor with wayleave access as a service strip, sewer wayleave or fibre cable wayleave (Lime Green)
-  Private hardstanding + designated parking area shared between plots 86-130 maintained by factor with wayleave access as a service strip, sewer wayleave or fibre cable wayleave (Light Red)
-  Private hardstanding & soft landscaped area, paths, railings, EV charging units, stairwells & bin/cycle store, shared between plots 107 - 130, adopted & maintained by factor with wayleave access as a service strip, sewer wayleave or fibre cable wayleave. (Bright yellow & black hatch) - plots 107-130 (Flats)
-  EV Charging Units + Associated Hardstanding to be adopted by Roads Department + maintained by City of Edinburgh Council EV Charging Partner



The development registered under titles MID75904 and MID174837 and plots 27 to 130 within have been DPA approved on behalf of:
The Keeper - 15 January 2025
 Keeper for the Registers of Scotland



Persimmon

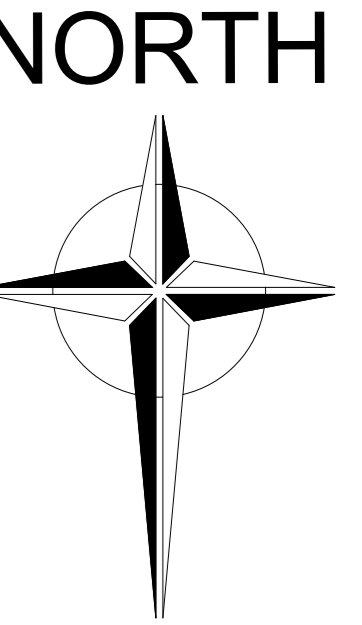
Persimmon Homes East Scotland
 Unit 1,
 Wester Inch Business Park,
 Old Well Court,
 Bathgate,
 West Lothian,
 EH48 2TQ
 19th September 2024





LEGEND

- Site Boundary
- Roadways, footpaths and parking adopted and maintained by City of Edinburgh Council Roads Department. (Grey)
- Housing, soft landscaping, and hardstanding adopted & maintained by Housing Association. Plots **1-26** (Pink Diagonal Hatch & Pink Dashed Boundary)
- Public open space, pathways and landscaping maintained by factor with wayleave access as a service strip, sewer wayleave or fibre cable wayleave (Light Green)
- Private front gardens owned by associated plot & maintained by factor. (Dark Green)
- SUDs basin to be maintained by the factor and adopted by Scottish Water (Light Blue)
- Substation and associated parking to be adopted and maintained by the utility provider (light purple)
- Private hardstanding area shared between plots **60-63** maintained by factor, with wayleave access as a service strip, sewer wayleave or fibre cable wayleave. (Peach)
- Private hardstanding area shared between plots **66-69** maintained by factor, with wayleave access as a service strip, sewer wayleave or fibre cable wayleave. (Lilac)
- Private hardstanding area shared between plots **38-41** maintained by factor, with wayleave access as a service strip, sewer wayleave or fibre cable wayleave. (Orange)
- Private hardstanding area shared between plots **31-33** maintained by factor with wayleave access as a service strip, sewer wayleave or fibre cable wayleave. (Turquoise Hatch)
- Private hardstanding area shared between plots **27-30** maintained by factor with wayleave access as a service strip, sewer wayleave or fibre cable wayleave. (Dark Blue)
- Private hardstanding area shared between plots **42-47 & 54-59** maintained by factor with wayleave access as a service strip, sewer wayleave or fibre cable wayleave. (Blue)
- Private hardstanding area shared between plots **75 & 81** maintained by factor with wayleave access as a service strip, sewer wayleave or fibre cable wayleave. (Magenta)
- Private hardstanding + designated parking area shared between plots **98-100 & 103-106** maintained by factor with wayleave access as a service strip, sewer wayleave or fibre cable wayleave (Cyan)
- Private hardstanding shared between plots **70-73** maintained by factor with wayleave access as a service strip, sewer wayleave or fibre cable wayleave (Brown)
- Private hardstanding shared between plots **86-97** maintained by factor with wayleave access as a service strip, sewer wayleave or fibre cable wayleave (Lime Green)
- Private hardstanding + designated parking area shared between plots **86-87 + 107-130** maintained by factor with wayleave access as a service strip, sewer wayleave or fibre cable wayleave (Light Red)
- Private hardstanding & soft landscaped area, paths, railings, EV charging units, stairwells & bin/cycle store, shared between plots 107 - 130, adopted & maintained by factor with wayleave access as a service strip, sewer wayleave or fibre cable wayleave. (Bright yellow & black hatch) - plots **107-130 (Flats)**
- EV Charging Units + Associated Hardstanding to be adopted by Roads Department + maintained by City of Edinburgh Council EV Charging Partner



Greendykes AH1, H & J - DMS - Rev.A

Persimmon

Persimmon Homes East Scotland
 Unit 1,
 Wester Inch Business Park,
 Old Well Court,
 Bathgate,
 West Lothian,
 EH48 2TQ
 19th September 2024

