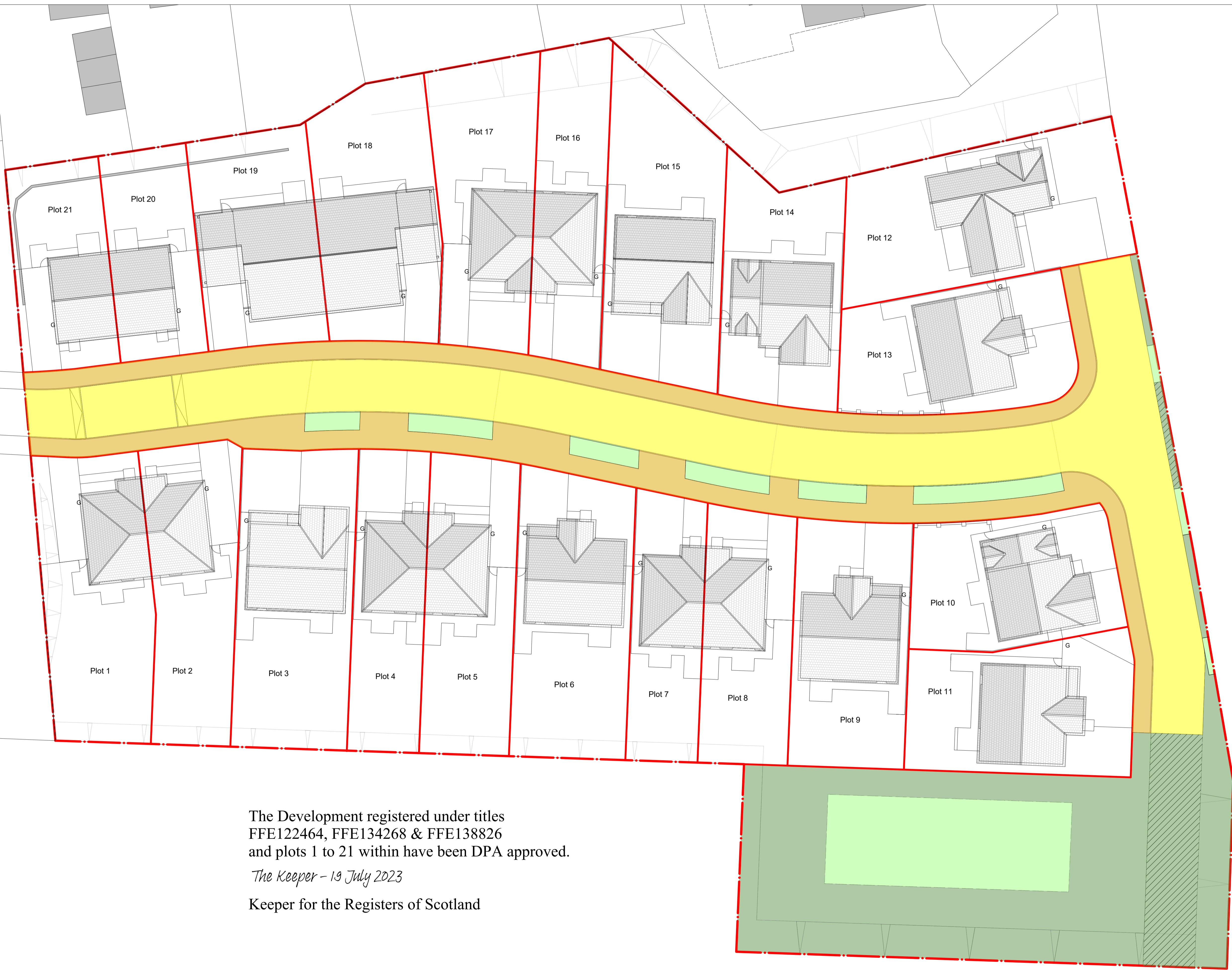
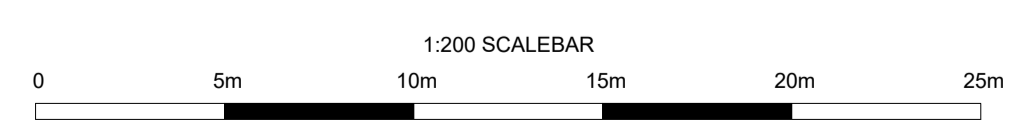


- Key**
- Development boundary
 - Feu boundary
 - Adoptable road
 - Adoptable footpath
 - Adoptable swale / filter trench and underground attenuation tanks (SUDs)
 - Factor maintained soft landscaping
 - Future access retained rights. Factor maintained. Service access where next to SUDs.



The Development registered under titles
 FFE122464, FFE134268 & FFE138826
 and plots 1 to 21 within have been DPA approved.
The Keeper - 19 July 2023
 Keeper for the Registers of Scotland



Rev	Description	Date
QUALE HOMES Pine Lodge, Claymore Timber Frame Yard, Cupar Road, Ladybank, Fife, KY15 7RB Tel: 01337 589 100 Web: www.qualehomes.com		
Project: Proposed Housing Development Stratheden Place, Auchtermuchty, Fife		
Title: Master Feu Layout		
Date:	July 2023	Project No: -
Scale:	1:200	Drwg No: -
Paper Size:	A1	Rev No: -