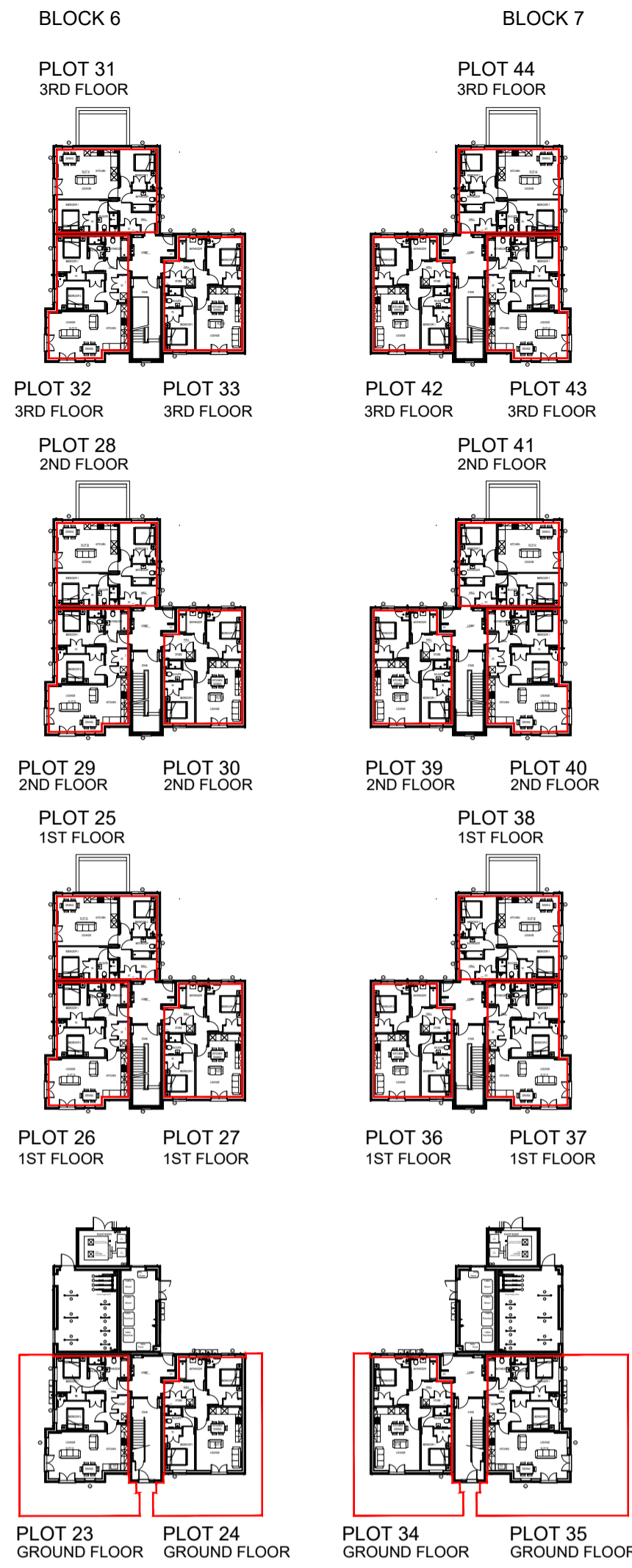


The development registered under title MID244156 and plots 1 to 113 within have been DPA approved on behalf of:

The Keeper 12th April 2024

Keeper for the Registers of Scotland



- DENOTES AFFORDABLE PLOTS
- DENOTES ROADS MAINTAINED BY LOCAL AUTHORITY.
- DENOTES FOOTPATHS MAINTAINED BY LOCAL AUTHORITY.
- DENOTES GRASS VERGE TO MAINTAINED BY FACTOR.
- DENOTES COMMON OPEN SPACE TO MAINTAINED BY FACTOR.
- DENOTES NON ADOPTABLE SURFACES TO MAINTAINED BY FACTOR.
- DENOTES CYCLE PATH/SUDS TRACK TO BE ADOPTED BY THE LOCAL AUTHORITY.
- DENOTES SUD'S POND & SURROUNDING OPEN SPACE MAINTAINED BY FACTOR UNTIL ADOPTED BY SCOTTISH WATER.
- DENOTES SUD'S BASIN & SURROUNDING OPEN SPACE MAINTAINED BY FACTOR UNTIL ADOPTED BY SCOTTISH WATER.
- DENOTES SHARED SURFACES TO BE MAINTAINED BY FACTOR.
- DENOTES PUMPING STATION AND SURROUNDING OPEN SPACE TO BE MAINTAINED BY FACTOR UNTIL ADOPTED BY SCOTTISH WATER.
- DENOTES APARTMENT BLOCK 6.
- DENOTES APARTMENT BLOCK 7.
- DENOTES EV CAR CHARGING COLUMNS (7kw (32amp) TYPE 2 SOCKETS AS INDICATED) TO BE MAINTAINED BY FACTOR.
- DENOTES STREET LIGHTING PLINTH TO BE MAINTAINED BY LOCAL AUTHORITY.
- DENOTES ELECTRICITY SUB STATION & ACCESS TRACK TO BE MAINTAINED BY SCOTTISH POWER.
- DENOTES ACOUSTIC BARRIERS.
- DENOTES ENGINEERED RETAINING WALL.

REV G. UPDATED TO SOLICITOR'S COMMENTS. 12.04.24
 REV F. UPDATED TO SOLICITOR'S COMMENTS. 10.04.24
 REV E. UPDATED TO SOLICITOR'S COMMENTS. 26.03.24
 REV D. UPDATED TO SOLICITOR'S COMMENTS. 26.03.24
 REV C. PRIVATE FLAT BLOCK FEU LINES ADDED. 18.03.24
 REV B. LAYOUT UPDATED TO REFLECT RCC COMMENTS. 12.02.24
 REV A. UPDATED TO LATEST SITE LAYOUT. 22.11.23

millerhomes
 Miller Homes Ltd
 Miller House, 2 Lochside View
 Edinburgh Park
 Edinburgh, EH12 9DH
 Telephone 0870 336 5000
 Fax 0870 336 5315
 www.millerhomes.co.uk

Project Title
MEADOWPARK LAND

Drawing Title
DPA PLAN

Scale	1:500	Drawn By	DR	Checked By		Authorised By	
Job No.		Drawing No.	MPL-DPA.01	Date		Revision	G

Original Sheet Size A1