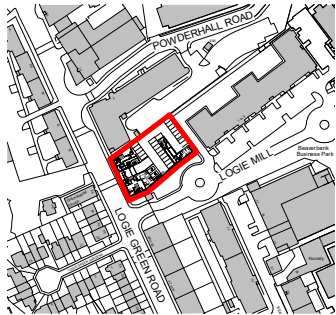
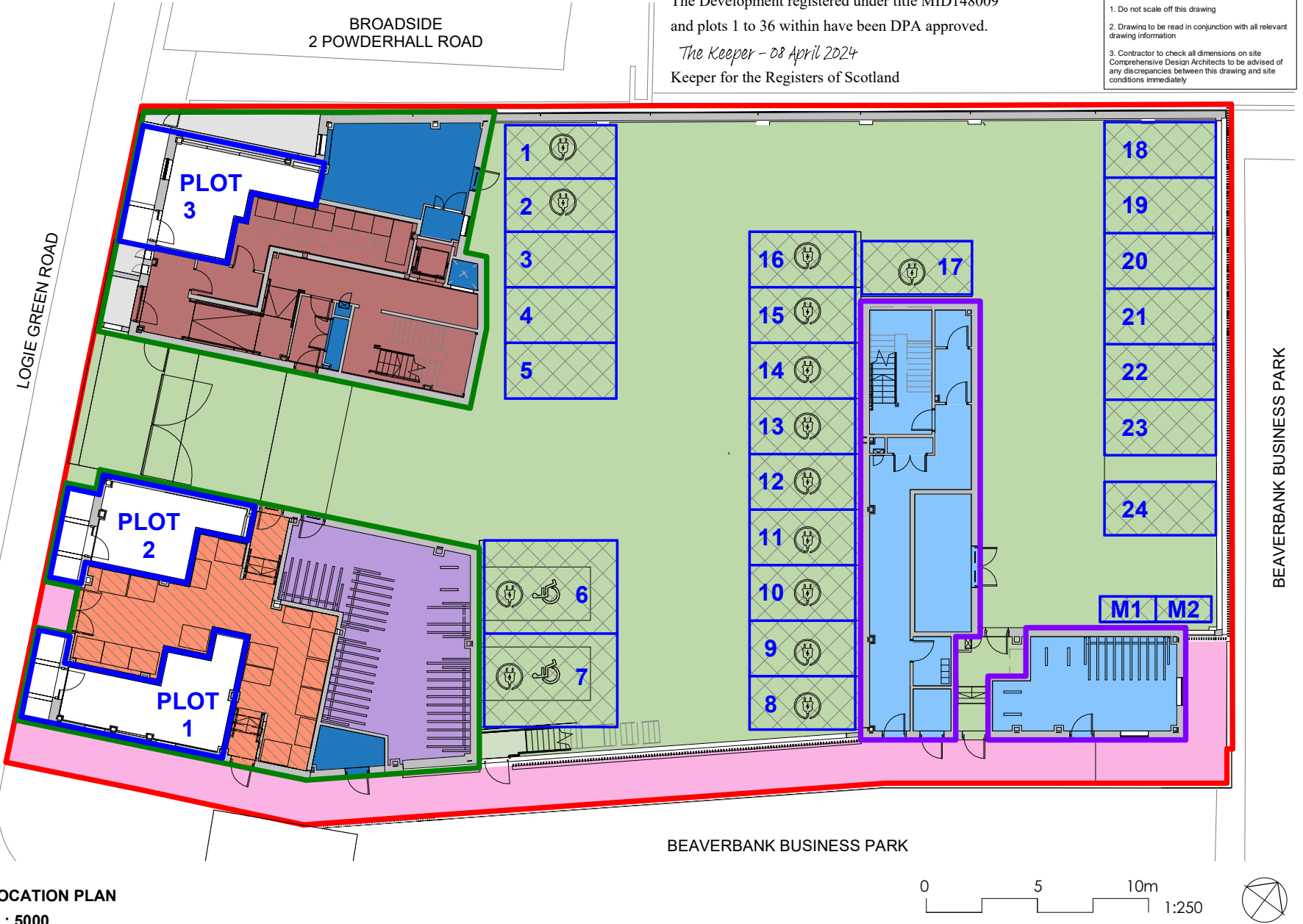


- The Development.
- Close 1
- Close 2
- Plot Boundaries
- Car Parking Spaces
- M Motorcycle Spaces
- Hillcrest accommodation
- Hillcrest private gardens
- Car Park
- Car parking and motor cycle parking spaces for Private for Sale apartments
- Paved areas common to Private for Sale apartments
- Bike store - Close 1
- Bin Store
- Access Paths
- Amenity Space
- Gardens common to Hillcrest accommodation only
- Plant Room - Close 1
- Circulation Spaces - Close 1

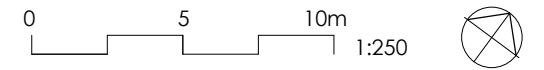
The Development registered under title MID148009 and plots 1 to 36 within have been DPA approved.  
*The Keeper - 08 April 2024*  
 Keeper for the Registers of Scotland

- Notes
1. Do not scale off this drawing
  2. Drawing to be read in conjunction with all relevant drawing information
  3. Contractor to check all dimensions on site. Comprehensive Design Architects to be advised of any discrepancies between this drawing and site conditions immediately



**LOCATION PLAN**  
1 : 5000

BEAVERBANK BUSINESS PARK

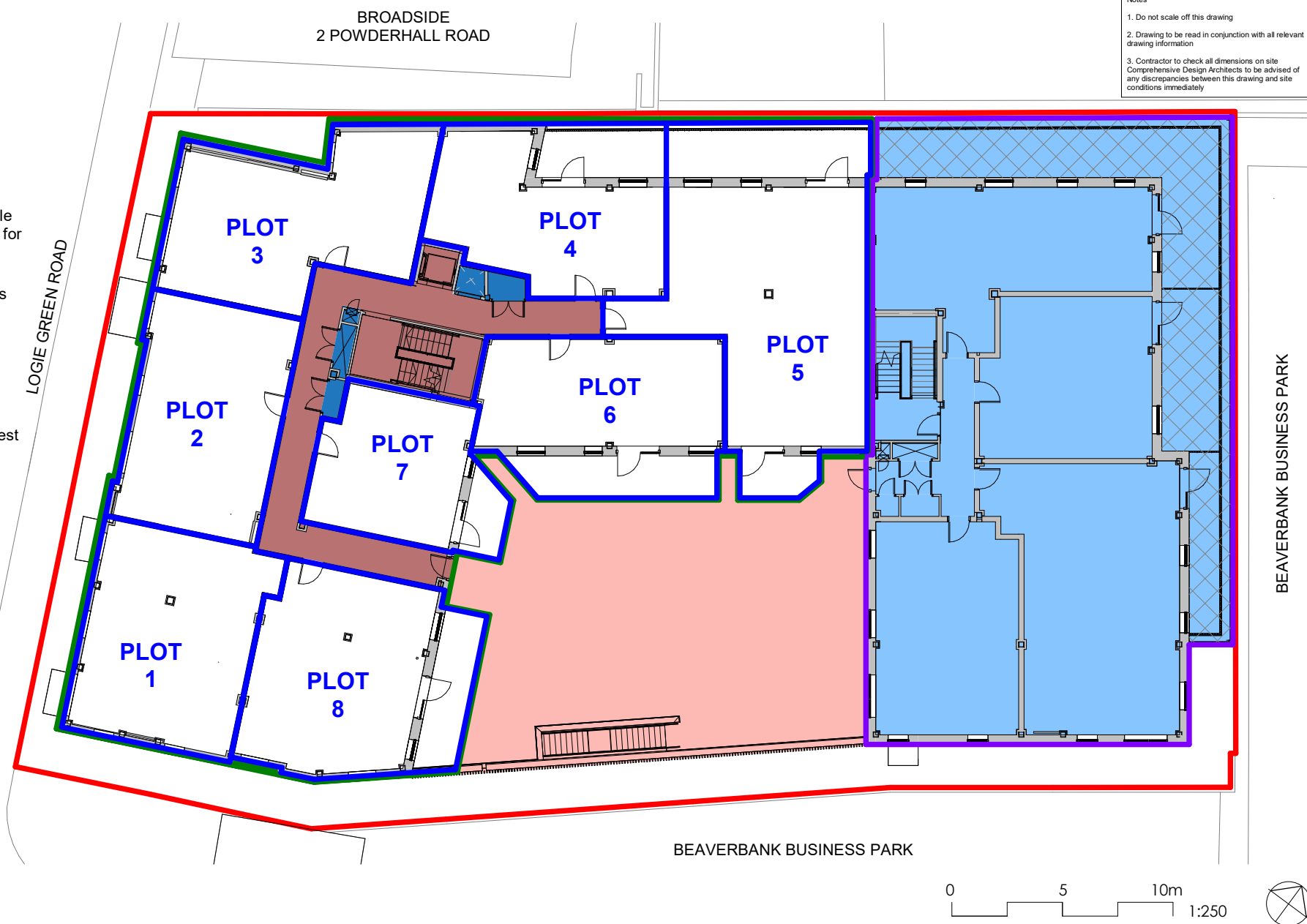


	APPROVED DEVELOPMENT PLAN - GROUND FLOOR PLOTS				P02 17.04.24 Parking spaces and corresponding numbers added. Key updated Sho Sho		project title <b>LOGIE GREEN ROAD, EDINBURGH</b>		job no 21021	dwg no LG-CDA-01-00-DR-A-008020		revision P02
	P01 03.04.24 First Issue Rev Date Description		Sho Sho drawn chkd		client <b>KELVIN PROPERTIES</b>		scale 1:250/5000@A4	status LEGAL	date 03.04.24	drawn Sho	checked Sho	

- The Development.
- Close 1
- Close 2
- Plot Boundaries
- Hillcrest accommodation
- Hillcrest private gardens
- Car Park
- Car parking and motor cycle parking spaces for Private for Sale apartments
- Paved areas common to Private for Sale apartments
- Bike store - Close 1
- Bin Store
- Access Paths
- Amenity Space
- Gardens common to Hillcrest accommodation only
- Plant Room - Close 1
- Circulation Spaces - Close 1

Notes

1. Do not scale off this drawing
2. Drawing to be read in conjunction with all relevant drawing information
3. Contractor to check all dimensions on site. Comprehensive Design Architects to be advised of any discrepancies between this drawing and site conditions immediately



## APPROVED DEVELOPMENT PLAN - FIRST FLOOR PLOTS



P01 Rev	03.04.24 Date	First Issue Description

SHo drawn	SHo chkd

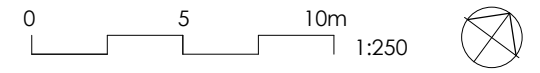
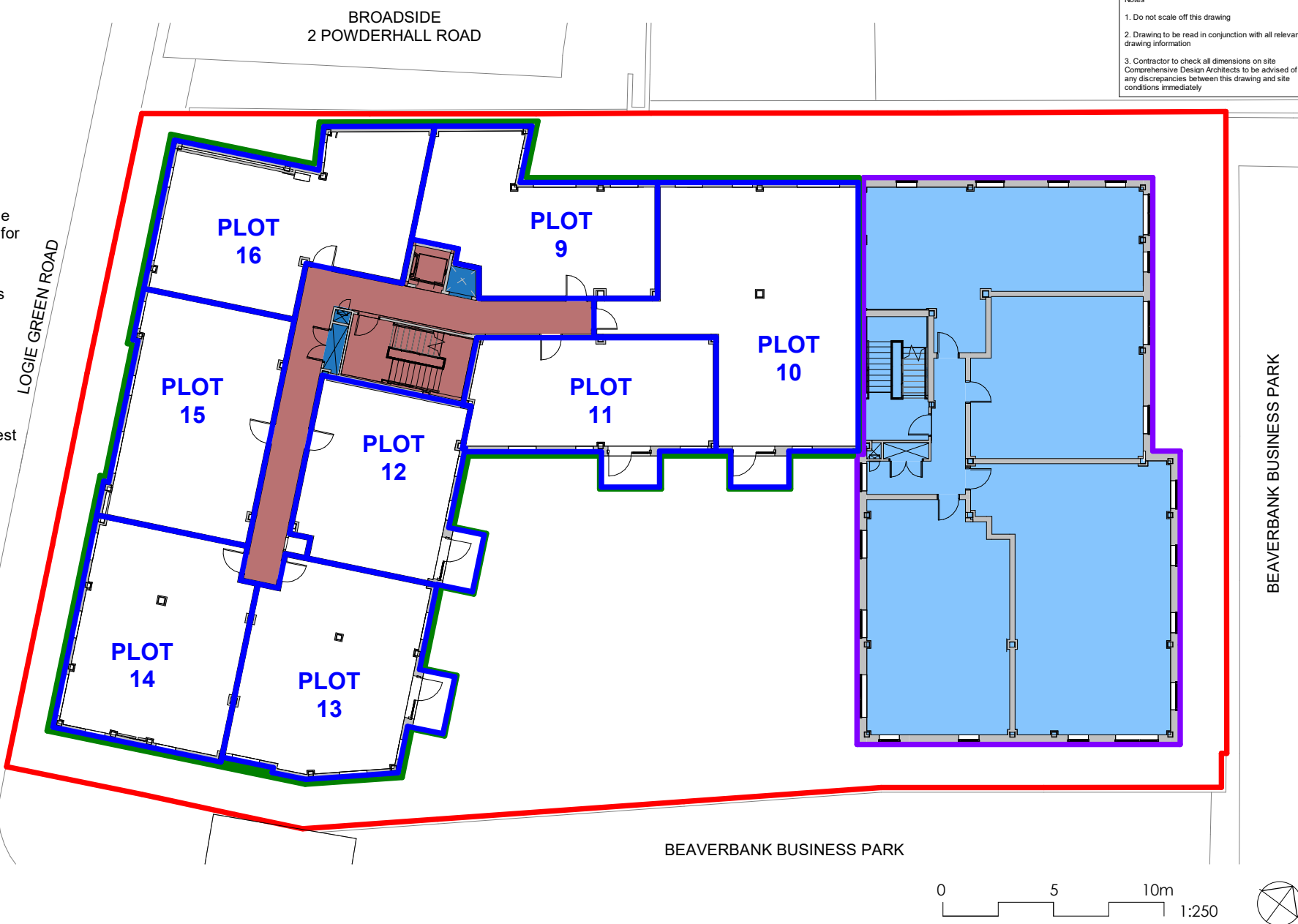
project title LOGIE GREEN ROAD, EDINBURGH	job no 21021	dwg no LG-CDA-01-01-DR-A-008021	revision P01
client KELVIN PROPERTIES	scale 1 : 250@A4	status LEGAL	date 03.04.24
		drawn SHo	checked SHo

project title LOGIE GREEN ROAD, EDINBURGH	job no 21021	dwg no LG-CDA-01-01-DR-A-008021	revision P01
client KELVIN PROPERTIES	scale 1 : 250@A4	status LEGAL	date 03.04.24
		drawn SHo	checked SHo

- The Development.
- Close 1
- Close 2
- Plot Boundaries
- Hillcrest accommodation
- Hillcrest private gardens
- Car Park
- Car parking and motor cycle parking spaces for Private for Sale apartments
- Paved areas common to Private for Sale apartments
- Bike store - Close 1
- Bin Store
- Access Paths
- Amenity Space
- Gardens common to Hillcrest accommodation only
- Plant Room - Close 1
- Circulation Spaces - Close 1

Notes

1. Do not scale off this drawing
2. Drawing to be read in conjunction with all relevant drawing information
3. Contractor to check all dimensions on site. Comprehensive Design Architects to be advised of any discrepancies between this drawing and site conditions immediately



## APPROVED DEVELOPMENT PLAN - SECOND FLOOR PLOTS



P01	03.04.24	First Issue
Rev	Date	Description

SHo drawn	SHo chkd
--------------	-------------

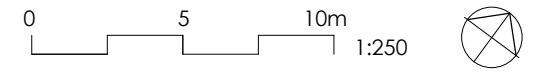
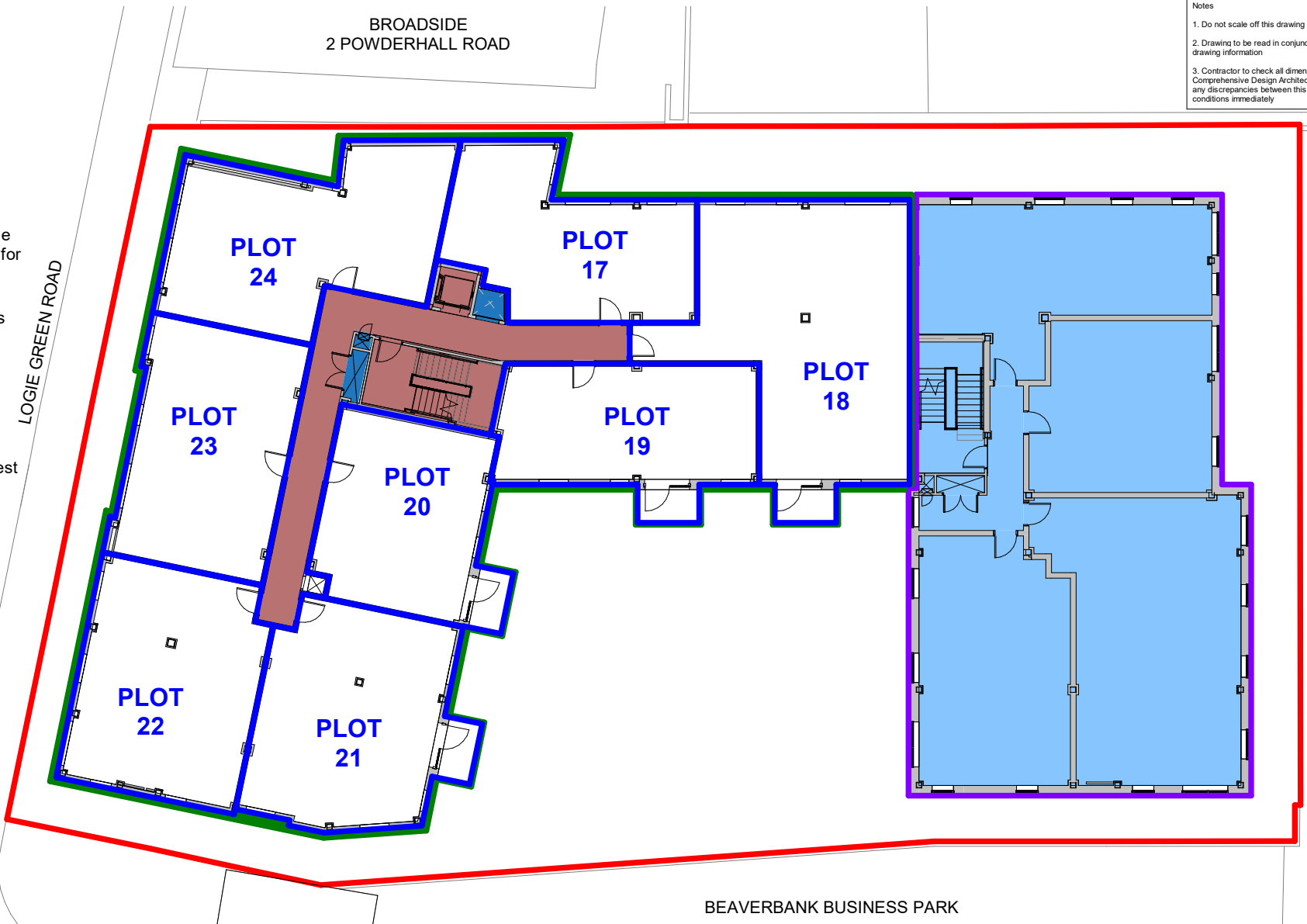
project title LOGIE GREEN ROAD, EDINBURGH
client KELVIN PROPERTIES

job no 21021	dwg no LG-CDA-01-02-DR-A-008022	date 03.04.24	drawn SHo	checked SHo	revision P01
scale 1 : 250@A4	status LEGAL				

- The Development.
- Close 1
- Close 2
- Plot Boundaries
- Hillcrest accommodation
- Hillcrest private gardens
- Car Park
- Car parking and motor cycle parking spaces for Private for Sale apartments
- Paved areas common to Private for Sale apartments
- Bike store - Close 1
- Bin Store
- Access Paths
- Amenity Space
- Gardens common to Hillcrest accommodation only
- Plant Room - Close 1
- Circulation Spaces - Close 1

Notes

1. Do not scale off this drawing
2. Drawing to be read in conjunction with all relevant drawing information
3. Contractor to check all dimensions on site. Comprehensive Design Architects to be advised of any discrepancies between this drawing and site conditions immediately



## APPROVED DEVELOPMENT PLAN - THIRD FLOOR PLOTS



P01	Rev	03.04.24	Date	First Issue
				Description

SHo drawn	SHo chkd
--------------	-------------

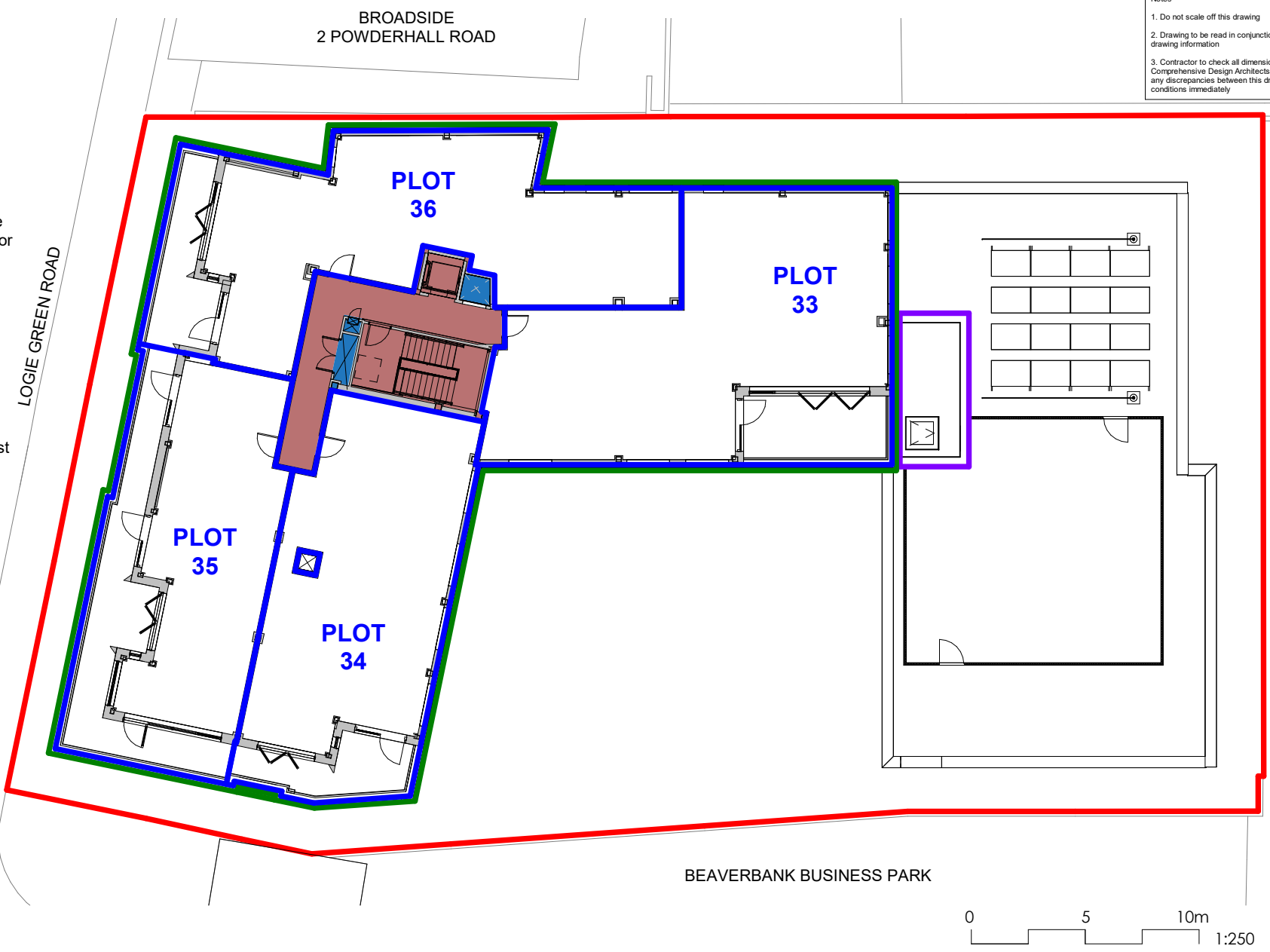
project title LOGIE GREEN ROAD, EDINBURGH	job no 21021	dwg no LG-CDA-01-03-DR-A-008023	revision P01
client KELVIN PROPERTIES	scale 1 : 250@A4	status LEGAL	date 03.04.24
		drawn SHo	checked SHo



- The Development.
- Close 1
- Close 2
- Plot Boundaries
- Hillcrest accommodation
- Hillcrest private gardens
- Car Park
- Car parking and motor cycle parking spaces for Private for Sale apartments
- Paved areas common to Private for Sale apartments
- Bike store - Close 1
- Bin Store
- Access Paths
- Amenity Space
- Gardens common to Hillcrest accommodation only
- Plant Room - Close 1
- Circulation Spaces - Close 1

Notes

1. Do not scale off this drawing
2. Drawing to be read in conjunction with all relevant drawing information
3. Contractor to check all dimensions on site. Comprehensive Design Architects to be advised of any discrepancies between this drawing and site conditions immediately



BEAVERBANK BUSINESS PARK

## APPROVED DEVELOPMENT PLAN - FIFTH FLOOR PLOTS



P01	Rev	03.04.24	Date	First Issue			project title	job no	dwg no	revision		
				Description			LOGIE GREEN ROAD, EDINBURGH	21021	LG-CDA-01-05-DR-A-008025	P01		
							client	scale	status	date	drawn	checked
							KELVIN PROPERTIES	1 : 250@A4	LEGAL	03.04.24	SHo	SHo