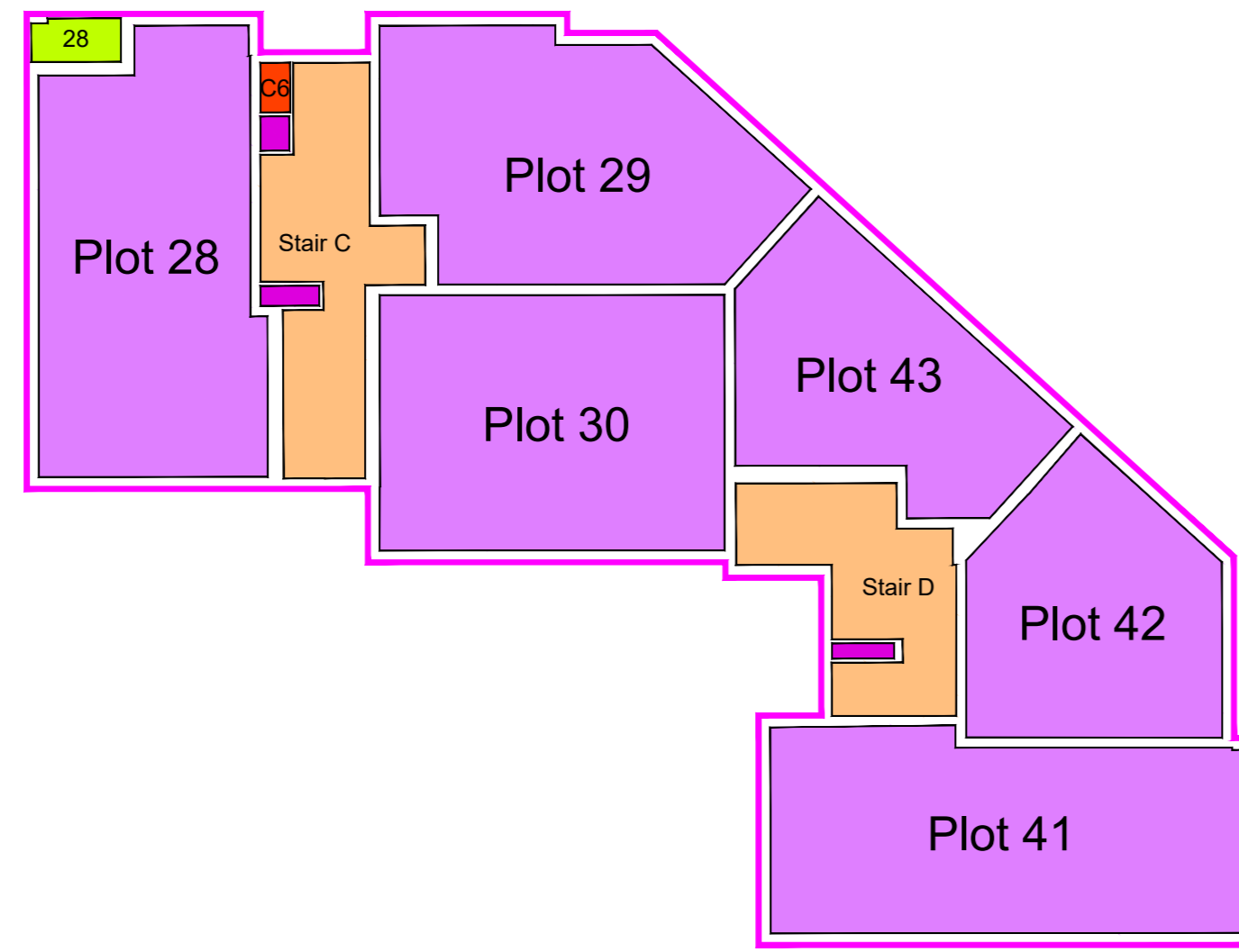
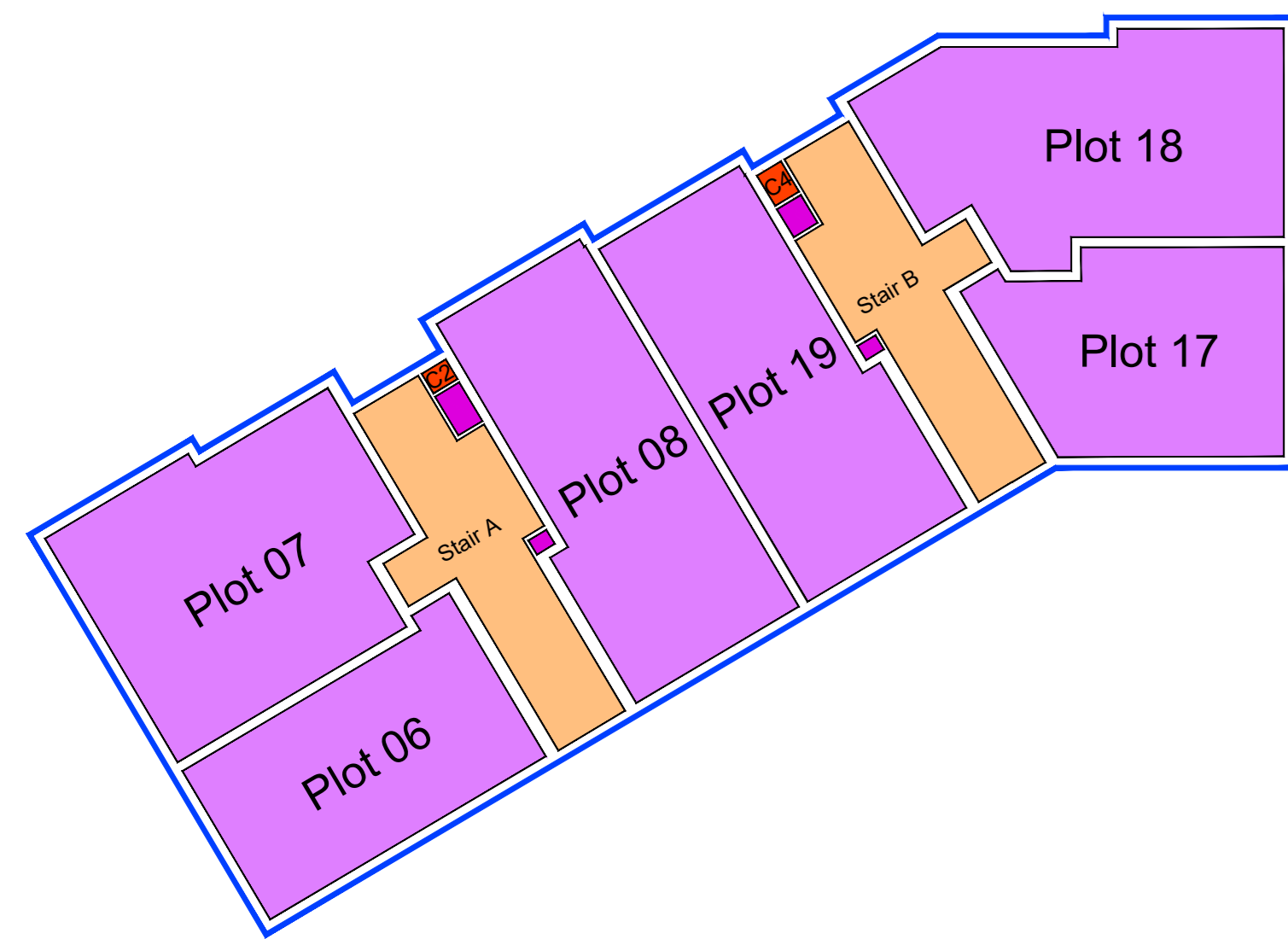
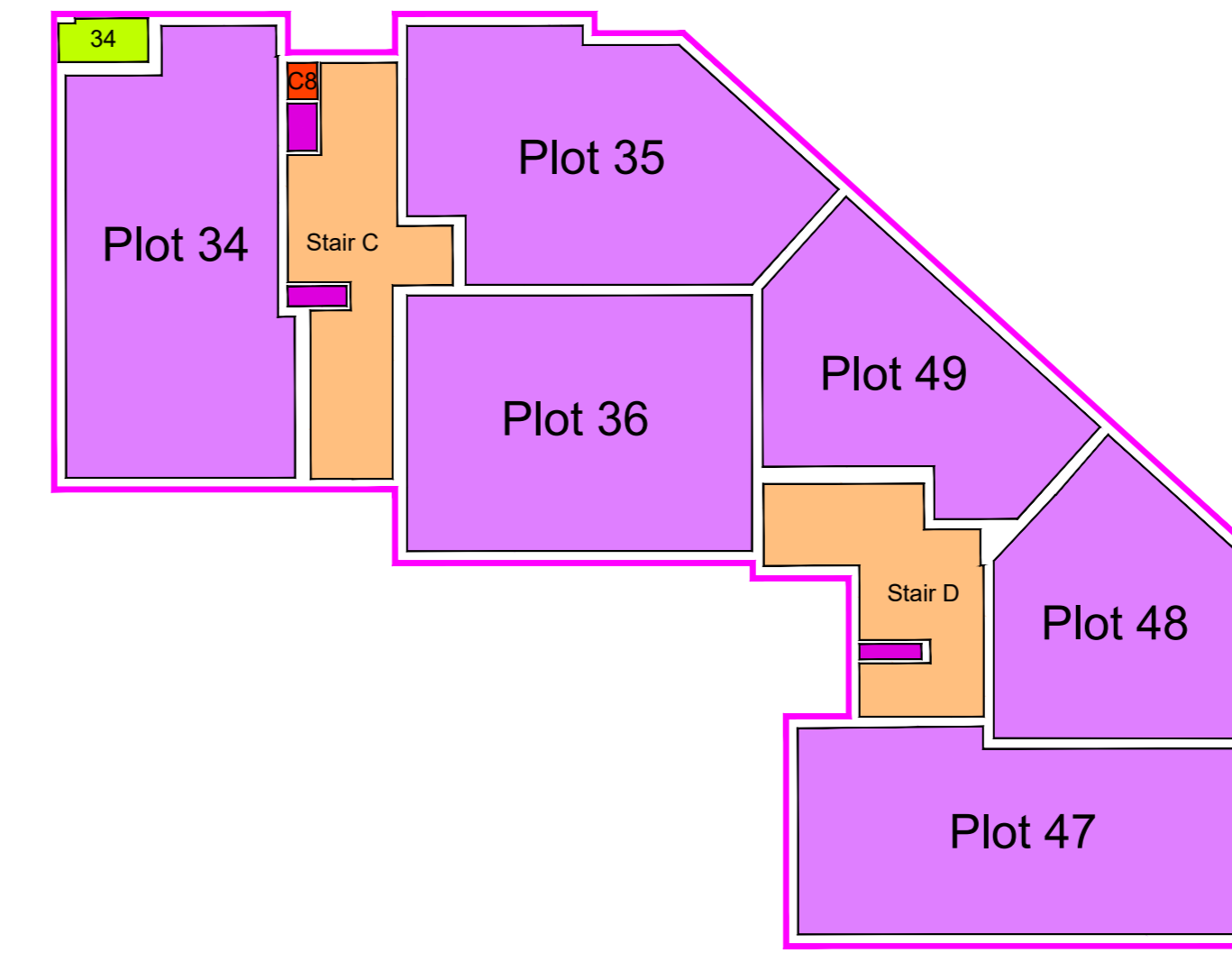


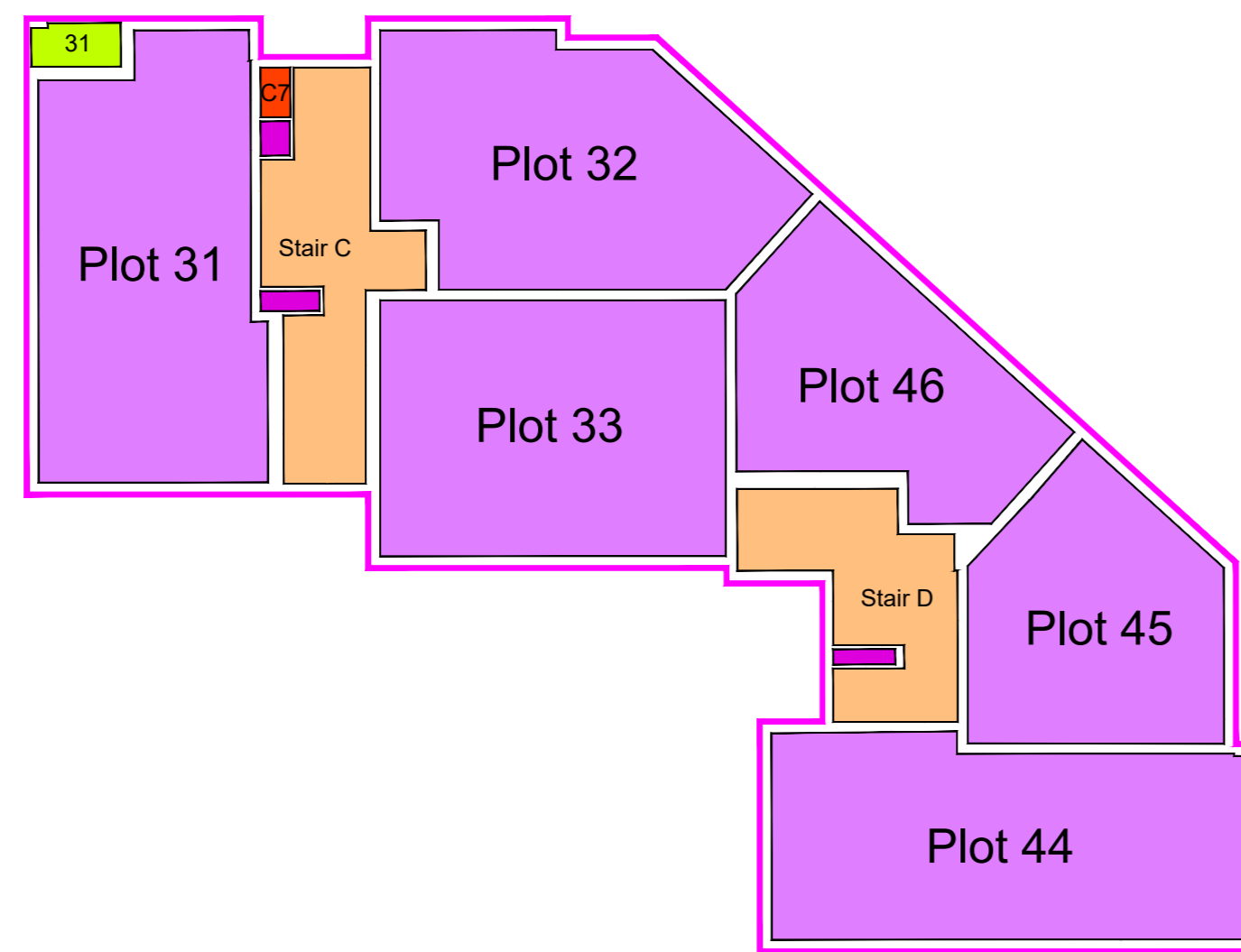
First Floor Site Plan - Scale 1:200



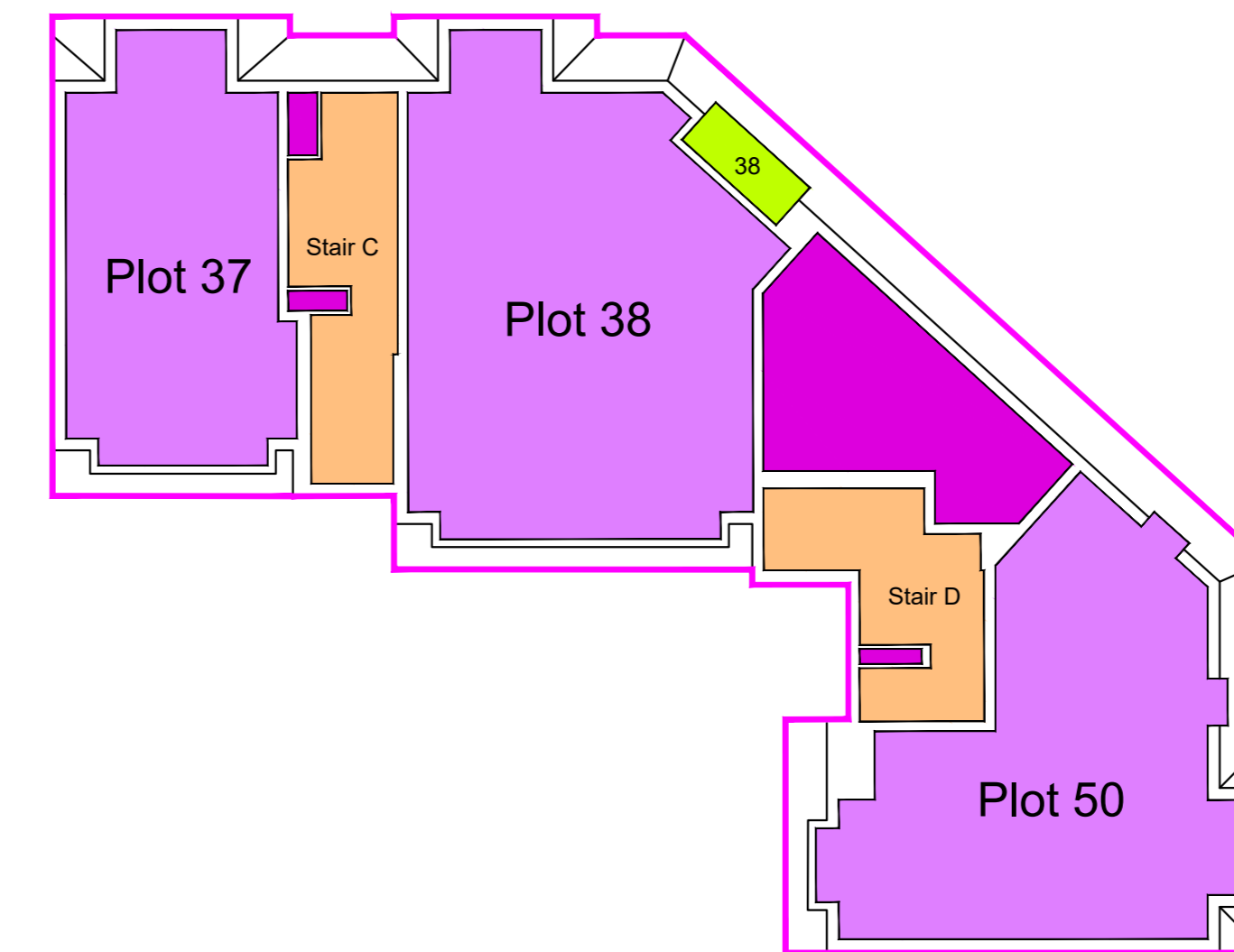
Third Floor Site Plan - Scale 1:200



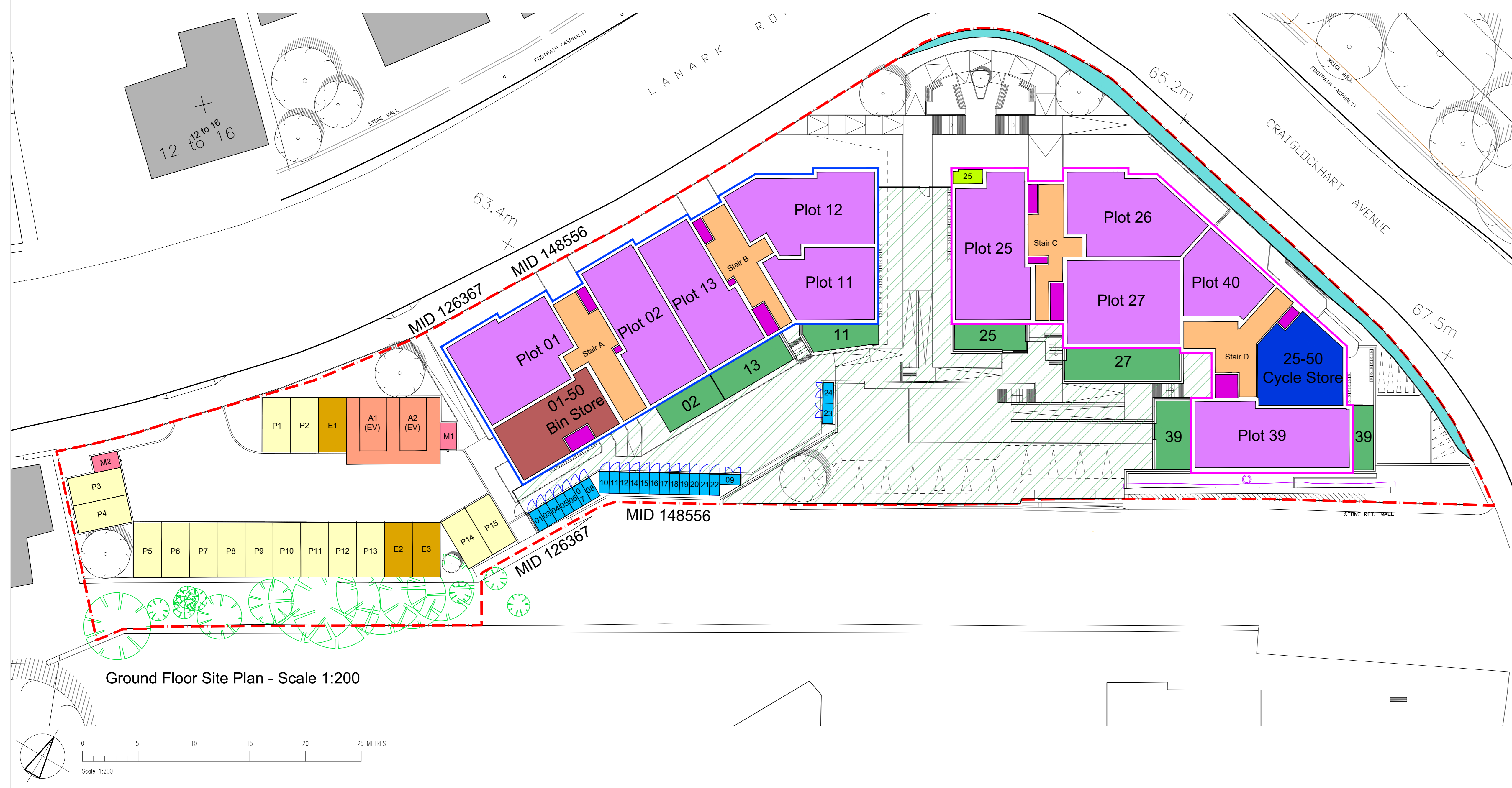
Second Floor Site Plan - Scale 1:200



Fourth Floor Site Plan - Scale 1:200



| Plot No                 | Floor Level  | Address   |
|-------------------------|--------------|---|
| <b>Block 1, Stair A</b> |              |   |
| 01                      | Ground Floor | Flat 1, 5 Lanark Road, Edinburgh, EH14 1TR            |
| 02                      | Ground Floor | Flat 2, 5 Lanark Road, Edinburgh, EH14 1TR            |
| 03                      | First Floor  | Flat 3, 5 Lanark Road, Edinburgh, EH14 1TR            |
| 04                      | First Floor  | Flat 4, 5 Lanark Road, Edinburgh, EH14 1TR            |
| 05                      | First Floor  | Flat 5, 5 Lanark Road, Edinburgh, EH14 1TR            |
| 06                      | Second Floor | Flat 6, 5 Lanark Road, Edinburgh, EH14 1TR            |
| 07                      | Second Floor | Flat 7, 5 Lanark Road, Edinburgh, EH14 1TR            |
| 08                      | Second Floor | Flat 8, 5 Lanark Road, Edinburgh, EH14 1TR            |
| 09                      | Third Floor  | Flat 9, 5 Lanark Road, Edinburgh, EH14 1TR            |
| 10                      | Third Floor  | Flat 10, 5 Lanark Road, Edinburgh, EH14 1TR           |
| <b>Block 1, Stair B</b> |              |   |
| 11                      | Ground Floor | Flat 1, 3 Lanark Road, Edinburgh, EH14 1TP            |
| 12                      | Ground Floor | Flat 2, 3 Lanark Road, Edinburgh, EH14 1TP            |
| 13                      | Ground Floor | Flat 3, 3 Lanark Road, Edinburgh, EH14 1TP            |
| 14                      | First Floor  | Flat 4, 3 Lanark Road, Edinburgh, EH14 1TP            |
| 15                      | First Floor  | Flat 5, 3 Lanark Road, Edinburgh, EH14 1TP            |
| 16                      | First Floor  | Flat 6, 3 Lanark Road, Edinburgh, EH14 1TP            |
| 17                      | Second Floor | Flat 7, 3 Lanark Road, Edinburgh, EH14 1TP            |
| 18                      | Second Floor | Flat 8, 3 Lanark Road, Edinburgh, EH14 1TP            |
| 19                      | Second Floor | Flat 9, 3 Lanark Road, Edinburgh, EH14 1TP            |
| 20                      | Third Floor  | Flat 10, 3 Lanark Road, Edinburgh, EH14 1TP           |
| 21                      | Third Floor  | Flat 11, 3 Lanark Road, Edinburgh, EH14 1TP           |
| 22                      | Third Floor  | Flat 12, 3 Lanark Road, Edinburgh, EH14 1TP           |
| 23                      | Fourth Floor | Flat 13, 3 Lanark Road, Edinburgh, EH14 1TP           |
| 24                      | Fourth Floor | Flat 14, 3 Lanark Road, Edinburgh, EH14 1TP           |
| <b>Block 2, Stair C</b> |              |   |
| 25                      | Ground Floor | Flat 1, 1 Lanark Road, Edinburgh, EH14 1TG            |
| 26                      | Ground Floor | Flat 2, 1 Lanark Road, Edinburgh, EH14 1TG            |
| 27                      | Ground Floor | Flat 3, 1 Lanark Road, Edinburgh, EH14 1TG            |
| 28                      | First Floor  | Flat 4, 1 Lanark Road, Edinburgh, EH14 1TG            |
| 29                      | First Floor  | Flat 5, 1 Lanark Road, Edinburgh, EH14 1TG            |
| 30                      | First Floor  | Flat 6, 1 Lanark Road, Edinburgh, EH14 1TG            |
| 31                      | Second Floor | Flat 7, 1 Lanark Road, Edinburgh, EH14 1TG            |
| 32                      | Second Floor | Flat 8, 1 Lanark Road, Edinburgh, EH14 1TG            |
| 33                      | Second Floor | Flat 9, 1 Lanark Road, Edinburgh, EH14 1TG            |
| 34                      | Third Floor  | Flat 10, 1 Lanark Road, Edinburgh, EH14 1TG           |
| 35                      | Third Floor  | Flat 11, 1 Lanark Road, Edinburgh, EH14 1TG           |
| 36                      | Third Floor  | Flat 12, 1 Lanark Road, Edinburgh, EH14 1TG           |
| 37                      | Fourth Floor | Flat 13, 1 Lanark Road, Edinburgh, EH14 1TG           |
| 38                      | Fourth Floor | Flat 14, 1 Lanark Road, Edinburgh, EH14 1TG           |
| <b>Block 2, Stair D</b> |              |   |
| 39                      | Ground Floor | Flat 1, 59 Craiglockhart Avenue, Edinburgh, EH14 1LS  |
| 40                      | Ground Floor | Flat 2, 59 Craiglockhart Avenue, Edinburgh, EH14 1LS  |
| 41                      | First Floor  | Flat 3, 59 Craiglockhart Avenue, Edinburgh, EH14 1LS  |
| 42                      | First Floor  | Flat 4, 59 Craiglockhart Avenue, Edinburgh, EH14 1LS  |
| 43                      | First Floor  | Flat 5, 59 Craiglockhart Avenue, Edinburgh, EH14 1LS  |
| 44                      | Second Floor | Flat 6, 59 Craiglockhart Avenue, Edinburgh, EH14 1LS  |
| 45                      | Second Floor | Flat 7, 59 Craiglockhart Avenue, Edinburgh, EH14 1LS  |
| 46                      | Second Floor | Flat 8, 59 Craiglockhart Avenue, Edinburgh, EH14 1LS  |
| 47                      | Third Floor  | Flat 9, 59 Craiglockhart Avenue, Edinburgh, EH14 1LS  |
| 48                      | Third Floor  | Flat 10, 59 Craiglockhart Avenue, Edinburgh, EH14 1LS |
| 49                      | Third Floor  | Flat 11, 59 Craiglockhart Avenue, Edinburgh, EH14 1LS |
| 50                      | Fourth Floor | Flat 12, 59 Craiglockhart Avenue, Edinburgh, EH14 1LS |



Ground Floor Site Plan - Scale 1:200

- Key to markup
- - - Existing Title Boundaries (Existing Title Numbers Listed)
  - Block 1 External Outline
  - Block 2 External Outline
  - Plot Boundary & Feet
  - Communal Area
  - Bin Store - Plots 01-50
  - Electrical/Water Cupboards - Maintenance Access Only
  - Storage Cupboards - Labeled C1-C8 for reference
  - Internal Cycle Store - Plots 25-50
  - External Assigned Cycle Lockers - Plots 01, 03-12, 14-24 (Number represents assigned plot)
  - Private Gardens - Plots 02, 11, 13, 25, 27, 39 (Number represents assigned plot)
  - Shared Communal Garden Area
  - Private Balcony - Plots 25, 28, 31, 34
  - Widening to Adapted Footpath
  - Parking Bays Labeled P1-P15 for reference
  - Parking Bays with Electric Vehicle Charging Labeled E1 to E3 for reference
  - Accessible Parking Bays Labeled A1 and A2 for reference, A1 has EV charging access
  - Motorcycle Parking Bays Labeled M1 and M2 for reference
- Note: Numbering of Parking Bays does not represent assigned plots.

The development registered under Titles MID126367 & MID148556 and all plots within have been DPA approved on behalf of:

*The Keeper - 1st February 2024*

**Keeper for the Registers of Scotland**