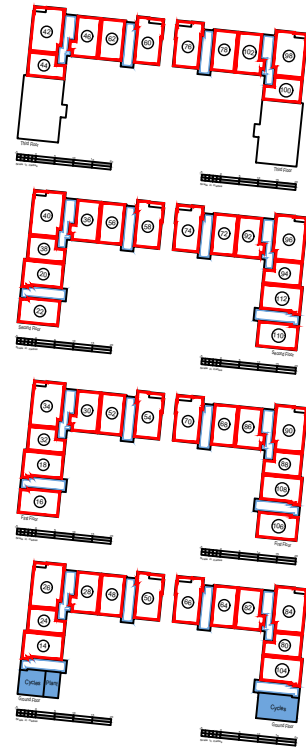


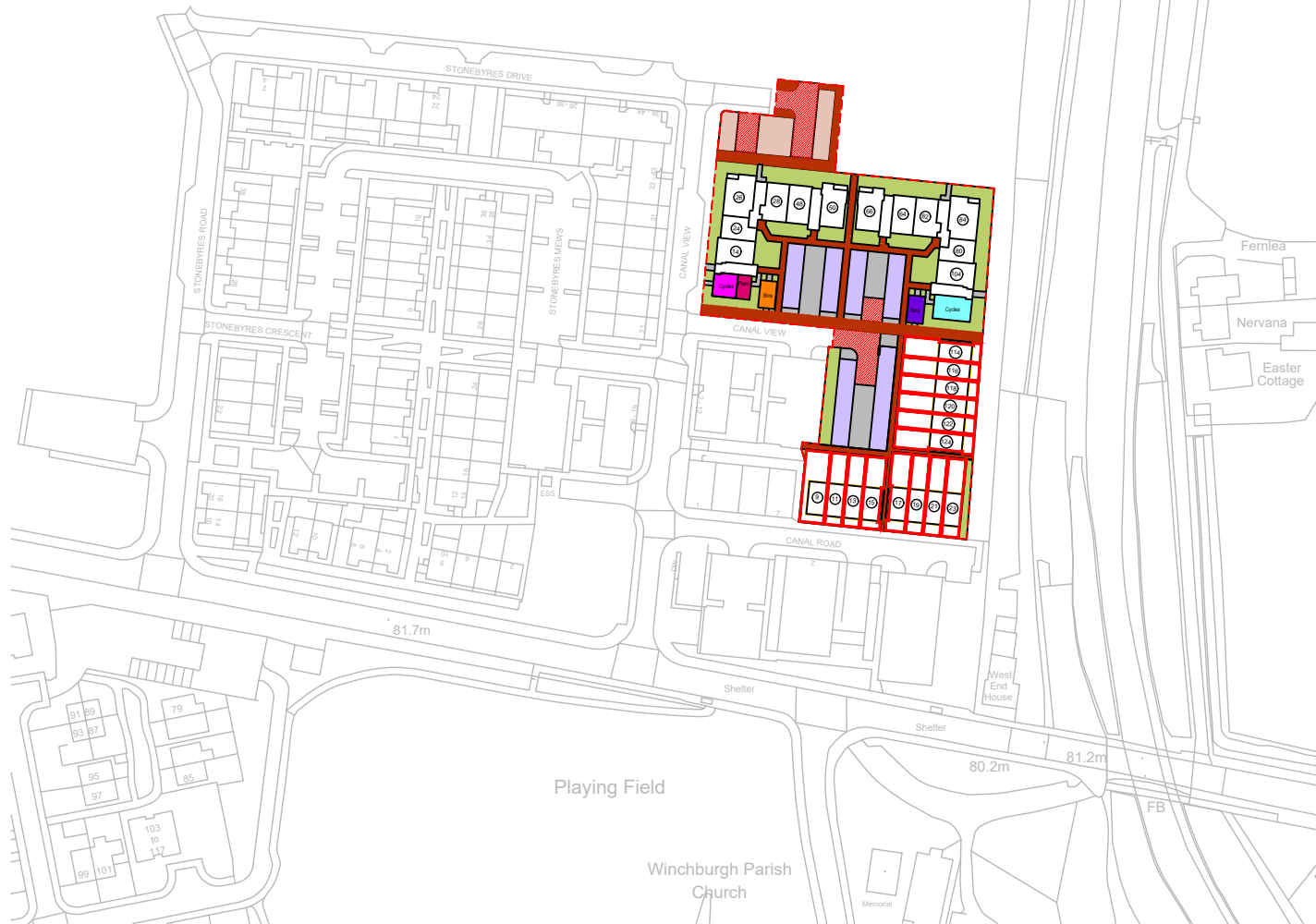
Q1s WINCHBURGH



The Development registered under Title WLN57535 and plots 9, 11, 13, 14, 15, 16, 17, 18, 19, 20, 21, 22, 23, 24, 26, 28, 30, 32, 34, 36, 38, 40, 42, 44, 46, 48, 50, 52, 54, 56, 58, 60, 62, 64, 66, 68, 70, 72, 74, 76, 78, 80, 82, 84, 86, 88, 90, 92, 94, 96, 98, 100, 102, 104, 106, 108, 110, 112, 114, 116, 118, 120, 122, 124 have been DPA approved.

Charlotte Ross 26/01/2023

Charlotte Ross - DPA Officer



- Common Soft Landscaped Areas
- Private Gardens
- Common Hard Landscaped Areas
- Adopted Footpath
- Adopted Roadway
- Non-Allocated Adopted Parking Spaces
- Non-Allocated Private Parking Spaces
- Common Boundary Wall
- Site Boundary
- Tank Room serving Blocks 1 & 2
- Bin Store to Block 1
- Bin Store to Block 2
- Cycle Store to Block 1
- Cycle Store to Block 2



Scale in metres

Ordnance Survey, (c) Crown Copyright 2019. All rights reserved. Licence number 100022432

