

- Development boundary
- Plot boundary
- Wheatley Housing Association boundary
- ELC Housing Association boundary
- ZeroC/PPP development boundary
- Block 1
- Block 2
- Block 3
- Scottish Power substation
- Scottish Water SUDS basin
- Wayleave
- Adoptable access roads & paths
- Private access roads & paths
- Open ground
- Water course
- Open ground outwith title to be maintained by factor (SUDS basins)
- Below ground Scottish Water foul attenuation tank
- Below ground Scottish Water surface water attenuation tank
- Play area

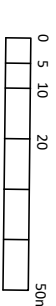


The development registered under title ELN29506 and plots 1 to 37, 42 to 96, & 101 to 150 within have been DPA approved on behalf of:
The Keeper - 22 January 2025
Keeper for the Registers of Scotland

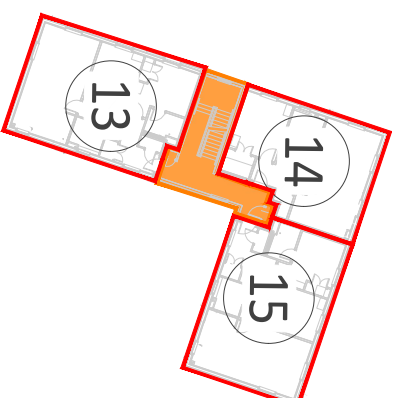
- F LP PLOT 101 BOUNDARY AMENDED TO INCLUDE GABLE GRASSED AREA EXCLUDING LAMP POST SERVING ZONE
- E LP WHEATLEY COMMON GROUND HATCHED AT ELC UNITS
- D LP PPP BOUNDARY UPDATED
- C LP LEGEND UPDATED TO BUSINESS PAULS COMMENTS
- B LP LEGEND UPDATED TO BUSINESS PAULS COMMENTS
- A LP Flat staircases hatched and added to the key. All hatched areas outwith boundary removed and inclusion of the trimtrail play area shown.

Rev By Details Date

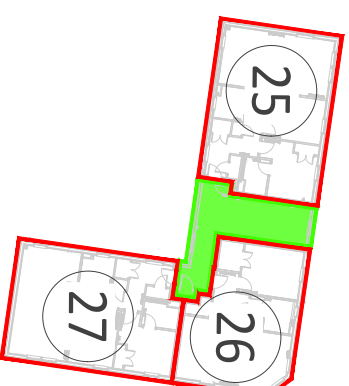
Project	Longniddry South, Phase 2	Drawing No.	1669(LG)010	Rev	F
Drawing	Development Plan Approval and Deed of Conditions Plan	Status	INFORMATION		
Scale	1:2000	Drawn	LP	Date	14/03/24



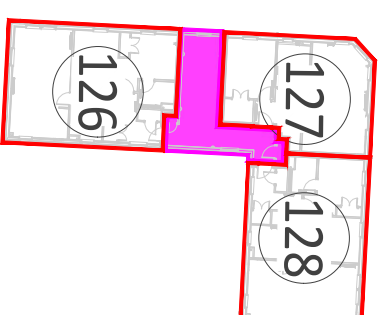
BLOCK 1 SECOND FLOOR PLAN



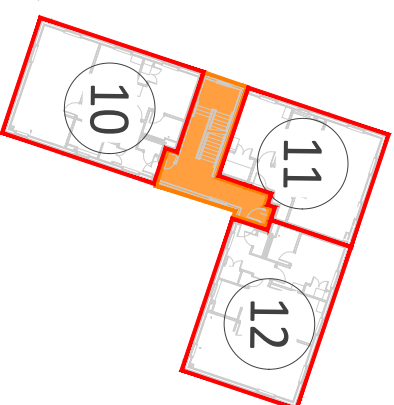
BLOCK 2 SECOND FLOOR PLAN



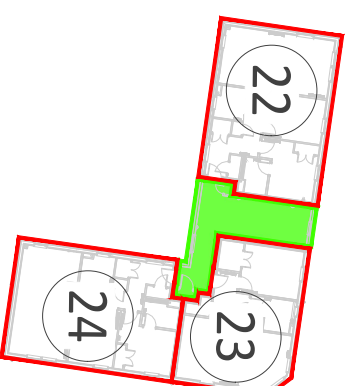
BLOCK 3 SECOND FLOOR PLAN



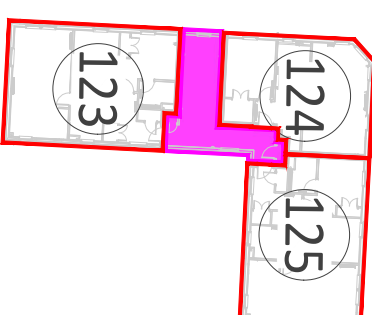
BLOCK 1 FIRST FLOOR PLAN



BLOCK 2 FIRST FLOOR PLAN



BLOCK 3 FIRST FLOOR PLAN



- Plot boundary
- Stair A
- Stair B
- Stair C
- Adoptable access roads
- Private access roads & paths
- Open ground

BLOCK 1 GROUND FLOOR PLAN



BLOCK 2 GROUND FLOOR PLAN



BLOCK 3 GROUND FLOOR PLAN



Rev	By	Details	Date
A	LP	LEGEND UPDATED TO BUSINESS PAULS COMMENTS	10/07/24
-	LP	FIRST ISSUE	03/07/24

Project	Longniddry South, Phase 2	Drawing No.	1669(LG)011	Rev	A
Drawing	Development Plan Approval	Status	INFORMATION		
Scale	1:500	Drawn	LP	Date	03/07/24