

**DPA LEGEND**

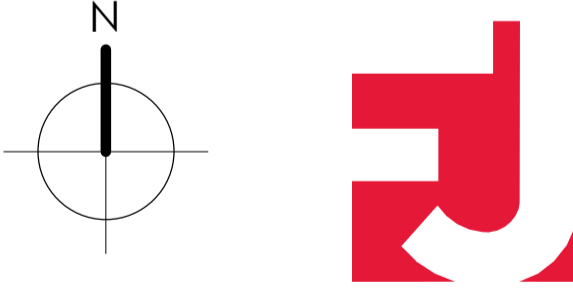
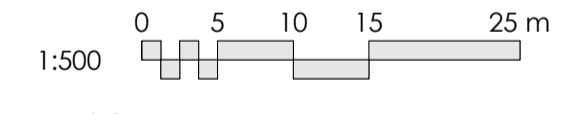
- BLOCK 1 - SCIENNES APARTMENTS (SA)
- SCIENNES PHARMACY (SP)
- BLOCK 2 - MILLERFIELD TOWNHOUSES (MT)
- BLOCK 3 - MILLERFIELD APARTMENTS (MA)
- BLOCK 4 - RILLBANK TOWNHOUSES (RT)
- BLOCK 5 - RILLBANK EAST APARTMENTS (REA)
- BLOCK 6 - RILLBANK WEST APARTMENTS (RWA)
- SHARED BOUNDARY - PLOTS 55 AND 60
- SHARED BOUNDARY - PLOTS 46 AND 47
- SHARED BOUNDARY - PLOTS 46 AND 49
- SHARED BOUNDARY - COMMON TO MT / MA / RT / REA BLOCKS
- BLOCK OUTLINE
- INDIVIDUAL PLOT BOUNDARY
- PATH/ ACCESS COMMON TO MT / MA / RT / REA BLOCKS
- EXTERNAL PLANT COMMON TO MA AND REA BLOCKS

**TO BE ADDED:**  
 SERVICE STRIPS IN PRIVATE GARDENS  
 ALL SERVICES AND ROUTES  
 (DRAINAGE/WATER/SPEN/SPRINKLER/OPENREACH)

Rev	Date	By	Notes
P07	04/11/23	AR	Updated to comments
P06	07/03/24	AR	Boundary Added
P05	20/02/24	AR	Lot 03 Boundary Extents Update
P04	07/02/23	AR	Updated to suit latest landscaping plans
P03	18/01/24	AR	Updated as Noted
P02	11/12/23	AR	Updated to comments
P01	see title	-	First Issue

**INFORMATION**

- General Notes:**
- This drawing is copyright, reserved and remains the property of Fletcher Joseph Architects.
  - All levels and dimensions are to be checked on site by the contractor prior to fabrication, and any discrepancies must be reported immediately to the Architect.
  - All dimensions are to be read off this drawing and NOT scaled.
  - All work to be executed in strict accordance with the by-laws and regulations of the local authorities.
  - All work to conform to applicable codes of the British Standards.
  - Where indicated/required, all drawings are to be read in conjunction with all other documents issued by Fletcher Joseph and/or other professions.



**FLETCHER JOSEPH ASSOCIATES**  
 Architects

5 Millar Place • Edinburgh • EH10 5HU  
 T: 0131 447 5000  
 E: admin@fletcherjoseph.com  
 W: www.fletcherjoseph.com

The Development registered under title MID234683 and plots 1 to 38 within have been DPA approved.

*The Keeper - 04/04/2024*

Keeper for the Registers of Scotland

**Notes**

- Landscape in abeyance. TBC by OPEN - S&C
- Gridlines imported from OS Map Licence number 100022432

Client		
SQUARE & CRESCENT		
Project		
Royal Hospital for Sick Children Sciennes Road Edinburgh, EH9 1LF		
Title		
Site Development Plan DPA Plan Royal Meadows		
Date	Scale @ A1	Last Revision
03/11/23	1:500	Date 43
Drawn By	Checked By	Revised By
AR	FJA	AR
Drawing No.	Rev	
22785-FJA-ZZ-ZZ-DR-A-0090	P07	





RILLBANK TERRACE

REFER TO DRAWING 0050 FOR LOWER GROUND PRIVATE GARDENS / TERRACES

RILLBANK TERRACE

9 SCIENNES ROAD

9D SCIENNES ROAD

9C SCIENNES ROAD

SCIENNES ROAD

- Legend**
- Private plots
  - Private balconies
  - Private gardens / Terraces
  - Private cellar
  - Courtyard car parking space
  - Shared landscaping
  - Stair Common Parts
  - Plant room
  - Shared Parking Courtyard
  - Common footpath
  - Block boundary
  - Double height space
  - Area not included in the current floor plan view

**Notes**

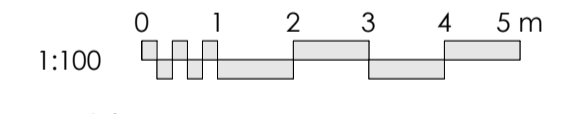
- Gridlines imported from OS Map Licence number 100022432

Rev	Date	By	Notes
P04	13.03.24	JC	Updated with S&C comments
P03	22.01.24	JC	Updated as per Burness Paul comments
P02	20.11.23	JC	Updated with Burness Paul comments
P01	see dwg	-	Information issue

**INFORMATION**

**General Notes:**

- This drawing is copyright, reserved and remains the property of Fletcher Joseph Architects.
- All levels and dimensions are to be checked on site by the contractor prior to fabrication, and any discrepancies must be reported immediately to the Architect.
- All dimensions are to be read off this drawing and NOT scaled.
- All work to be executed in strict accordance with the by-laws and regulations of the local authorities.
- All work to conform to applicable codes of the British Standards.
- Where indicated/required, all drawings are to be read in conjunction with all other documents issued by Fletcher Joseph and/or other professions.



**FLETCHER JOSEPH ASSOCIATES**  
Architects

5 Millar Place • Edinburgh • EH10 5HU  
T: 0131 447 5000  
E: admin@fletcherjoseph.com  
W: www.fletcherjoseph.com

Client  
**SQUARE & CRESCENT**

Project  
Royal Hospital for Sick Children

Title  
DPA plan - Ground Floor

Hospital Building (Lot 01)

Date	Scale @ A1	Last Revision
26.10.23	1:100	13.03.24
Drawn By JC	Checked By AR	Revised By JC
Drawing No. 22785-FJA-HB-00-DR-A-0051		Rev P04

PHARMACY BUILDING. REFER TO SEPARATE DRAWING

HB00





- Legend**
- Private plots
  - Private balconies
  - Private gardens / Terraces
  - Private cellar
  - Courtyard car parking space
  - Shared landscaping
  - Stair Common Parts
  - Plant room
  - Shared Parking Courtyard
  - Common footpath
  - Block boundary
  - Double height space
  - Area not included in the current floor plan view

**Notes**

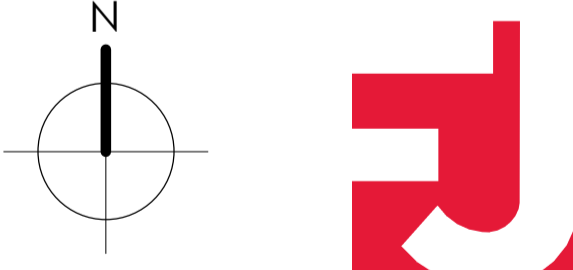
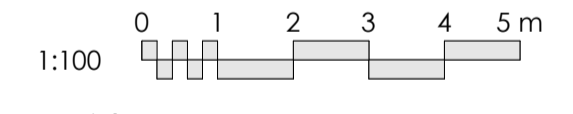
- Gridlines imported from OS Map Licence number 100022432

P02	13.03.24	JC	Updated with S&C comments
P01	see dwg	-	Information issue
Rev	Date	By	Notes

**INFORMATION**

**General Notes:**

- This drawing is copyright, reserved and remains the property of Fletcher Joseph Architects.
- All levels and dimensions are to be checked on site by the contractor prior to fabrication, and any discrepancies must be reported immediately to the Architect.
- All dimensions are to be read off this drawing and NOT scaled.
- All work to be executed in strict accordance with the by-laws and regulations of the local authorities.
- All work to conform to applicable codes of the British Standards.
- Where indicated/required, all drawings are to be read in conjunction with all other documents issued by Fletcher Joseph and/or other professions.



**FLETCHER JOSEPH ASSOCIATES**  
Architects

5 Millar Place • Edinburgh • EH10 5HU  
T: 0131 447 5000  
E: admin@fletcherjoseph.com  
W: www.fletcherjoseph.com

Client  
**SQUARE & CRESCENT**

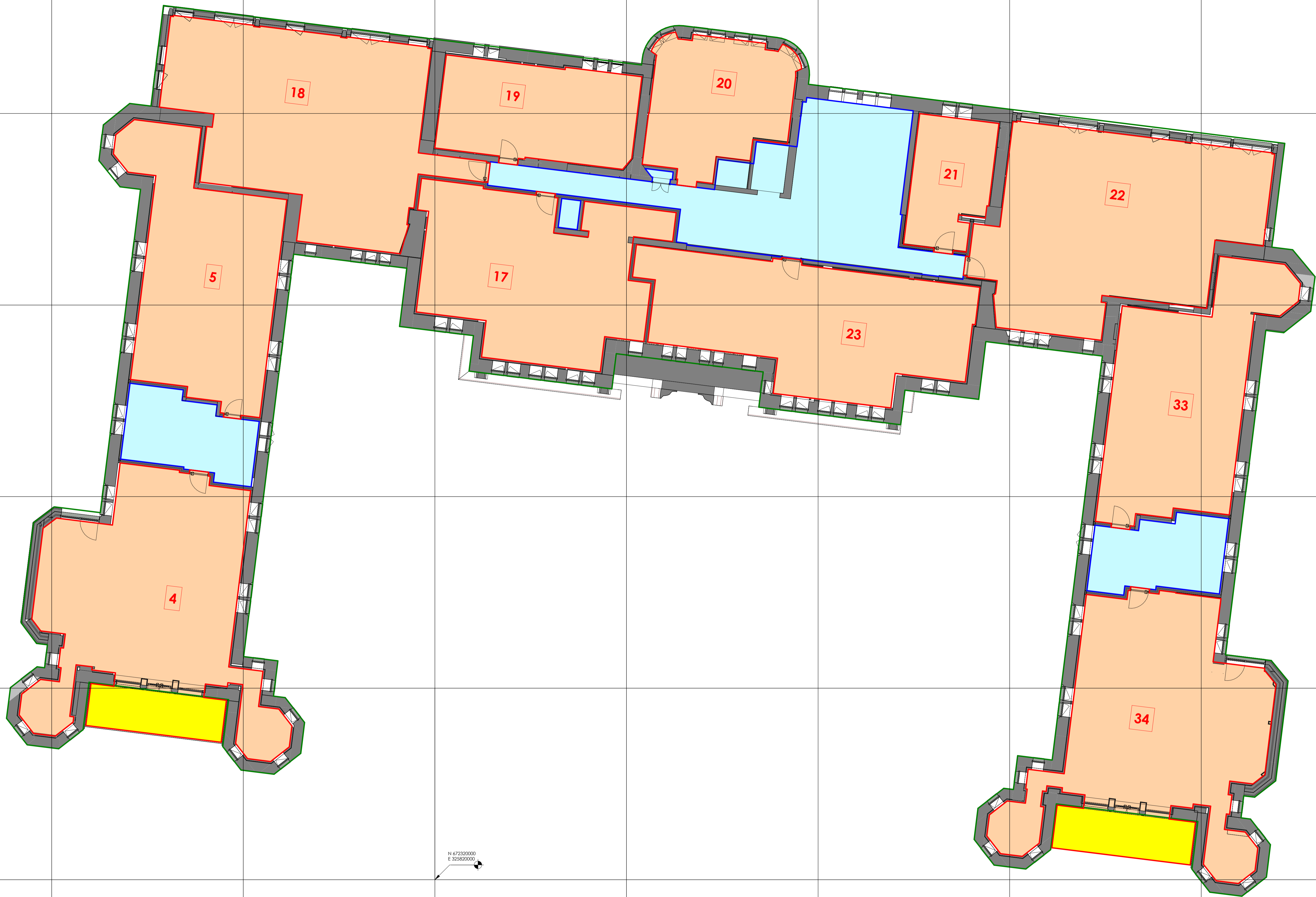
Project  
Royal Hospital for Sick Children

Title  
DPA plan - Ground Floor Mezzanine

Hospital Building (Lot 01)

Date	Scale @ A1	Last Revision
07.02.24	1:100	13.03.24
Drawn By	Checked By	Revised By
AB	JC	JC
Drawing No.	Rev	
22785-FJA-HB-M0-DR-A-0052	P02	

HB M0



- Legend**
- Private plots
  - Private balconies
  - Private gardens / Terraces
  - Private cellar
  - Courtyard car parking space
  - Shared landscaping
  - Stair Common Parts
  - Plant room
  - Shared Parking Courtyard
  - Common footpath
  - Block boundary
  - Double height space
  - Area not included in the current floor plan view

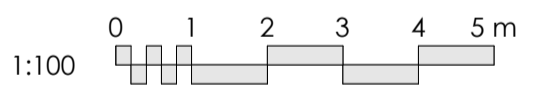
**Notes**

- Gridlines imported from OS Map Licence number 100022432

P03	13.03.24	JC	Updated with S&C comments
P02	19.02.24	JC	Updated as per BP comments
P01	see dwg	-	Information issue
Rev	Date	By	Notes

**INFORMATION**

- General Notes:**
- This drawing is copyright, reserved and remains the property of Fletcher Joseph Architects.
  - All levels and dimensions are to be checked on site by the contractor prior to fabrication, and any discrepancies must be reported immediately to the Architect.
  - All dimensions are to be read off this drawing and NOT scaled.
  - All work to be executed in strict accordance with the by-laws and regulations of the local authorities.
  - All work to conform to applicable codes of the British Standards.
  - Where indicated/required, all drawings are to be read in conjunction with all other documents issued by Fletcher Joseph and/or other professions.



FLETCHER JOSEPH ASSOCIATES  
Architects

5 Millar Place • Edinburgh • EH10 5HU  
T: 0131 447 5000  
E: admin@fletcherjoseph.com  
W: www.fletcherjoseph.com

Client  
**SQUARE & CRESCENT**

Project  
Royal Hospital for Sick Children

Title  
DPA plan - 1st Floor

Hospital Building (Lot 01)

Date	Scale @ A1	Last Revision
07.02.24	1:100	13.03.24
Drawn By	Checked By	Revised By
AB	JC	JC

Drawing No.	Rev
22785-FJA-HB-01-DR-A-0053	P03

HB01





- Legend**
- Private plots
  - Private balconies
  - Private gardens / Terraces
  - Private cellar
  - Courtyard car parking space
  - Shared landscaping
  - Stair Common Parts
  - Plant room
  - Shared Parking Courtyard
  - Common footpath
  - Block boundary
  - Double height space
  - Area not included in the current floor plan view

**Notes**

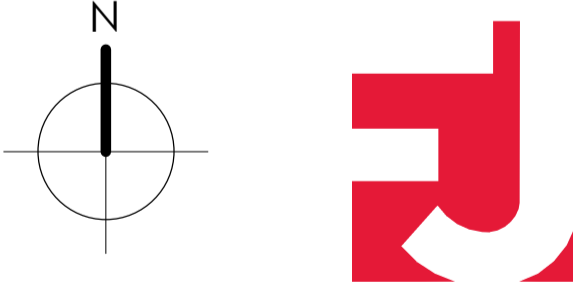
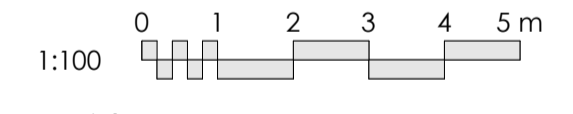
- Gridlines imported from OS Map Licence number 100022432

P02	13.03.24	JC	Updated with S&C comments
P01	see dwg	-	Information issue
Rev	Date	By	Notes

**INFORMATION**

**General Notes:**

- This drawing is copyright, reserved and remains the property of Fletcher Joseph Architects.
- All levels and dimensions are to be checked on site by the contractor prior to fabrication, and any discrepancies must be reported immediately to the Architect.
- All dimensions are to be read off this drawing and NOT scaled.
- All work to be executed in strict accordance with the by-laws and regulations of the local authorities.
- All work to conform to applicable codes of the British Standards.
- Where indicated/required, all drawings are to be read in conjunction with all other documents issued by Fletcher Joseph and/or other professions.



**FLETCHER JOSEPH ASSOCIATES**  
Architects

5 Millar Place • Edinburgh • EH10 5HU  
T: 0131 447 5000  
E: admin@fletcherjoseph.com  
W: www.fletcherjoseph.com

Client  
**SQUARE & CRESCENT**

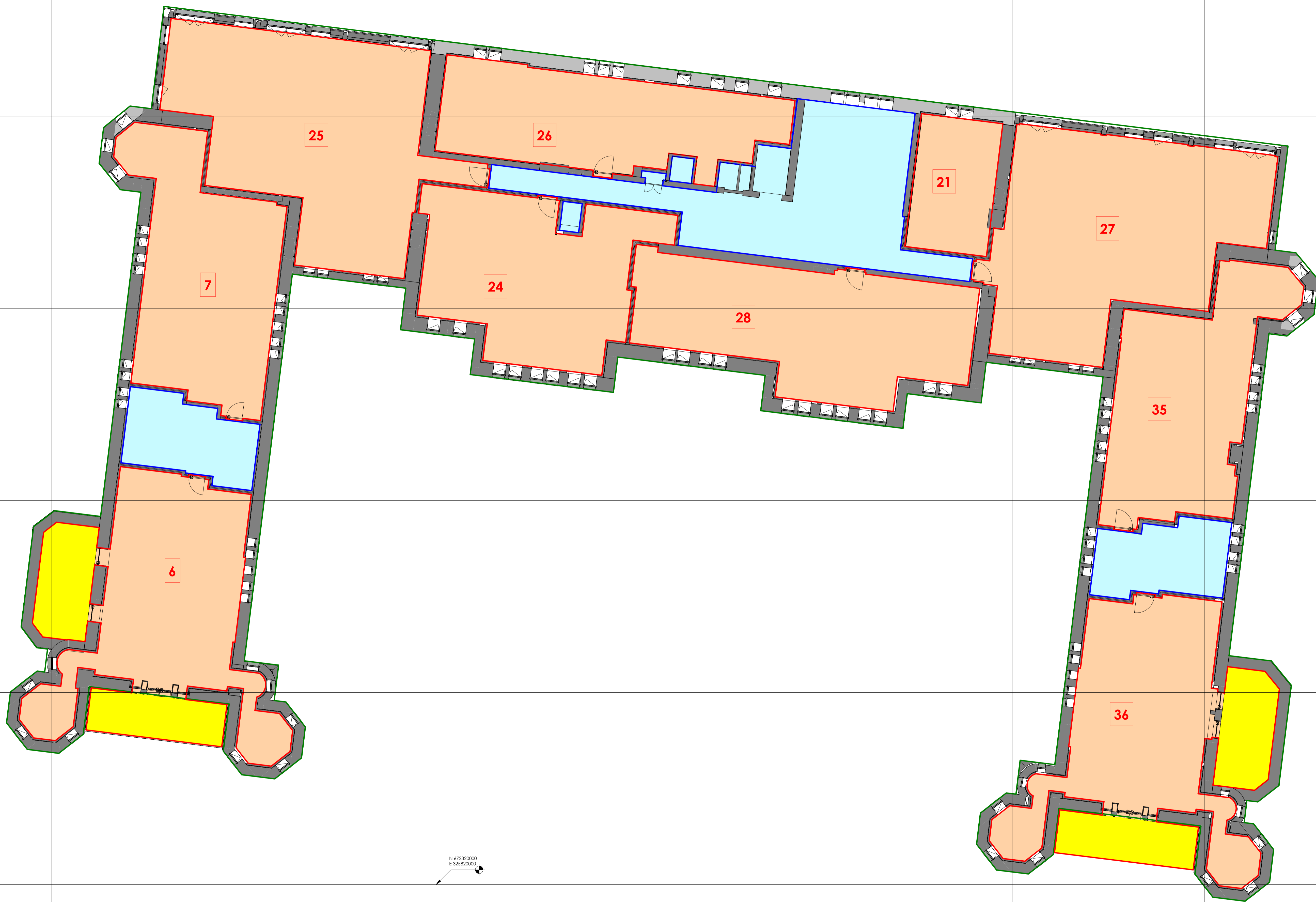
Project  
Royal Hospital for Sick Children

Title  
DPA plan - 1st Floor Mezzanine

Hospital Building (Lot 01)

Date	Scale @ A1	Last Revision
07.02.24	1:100	13.03.24
Drawn By	Checked By	Revised By
AB	JC	JC
Drawing No.	Rev	
22785-FJA-HB-M1-DR-A-0054	P02	

HBM1



- Legend**
- Private plots
  - Private balconies
  - Private gardens / Terraces
  - Private cellar
  - Courtyard car parking space
  - Shared landscaping
  - Stair Common Parts
  - Plant room
  - Shared Parking Courtyard
  - Common footpath
  - Block boundary
  - Double height space
  - Area not included in the current floor plan view

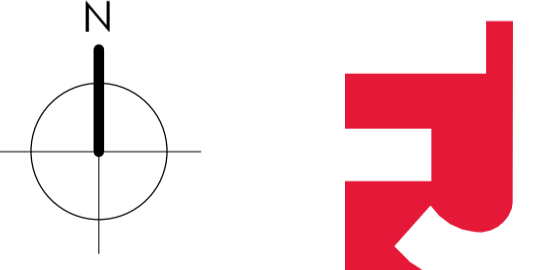
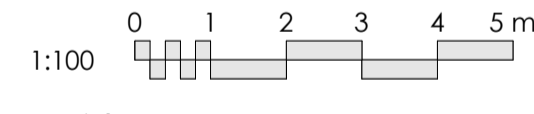
**Notes**

- Gridlines imported from OS Map Licence number 100022432

P03	13.03.24	JC	Updated with S&C comments
P02	19.02.24	JC	Updated as per BP comments
P01	see dwg	-	Information issue
Rev	Date	By	Notes

**INFORMATION**

- General Notes:**
- This drawing is copyright, reserved and remains the property of Fletcher Joseph Architects.
  - All levels and dimensions are to be checked on site by the contractor prior to fabrication, and any discrepancies must be reported immediately to the Architect.
  - All dimensions are to be read off this drawing and NOT scaled.
  - All work to be executed in strict accordance with the by-laws and regulations of the local authorities.
  - All work to conform to applicable codes of the British Standards.
  - Where indicated/required, all drawings are to be read in conjunction with all other documents issued by Fletcher Joseph and/or other professions.



FLETCHER JOSEPH ASSOCIATES  
Architects

5 Millar Place • Edinburgh • EH10 5HU  
T: 0131 447 5000  
E: admin@fletcherjoseph.com  
W: www.fletcherjoseph.com

Client  
**SQUARE & CRESCENT**

Project  
Royal Hospital for Sick Children

Title  
DPA plan - 2nd Floor

Hospital Building (Lot 01)

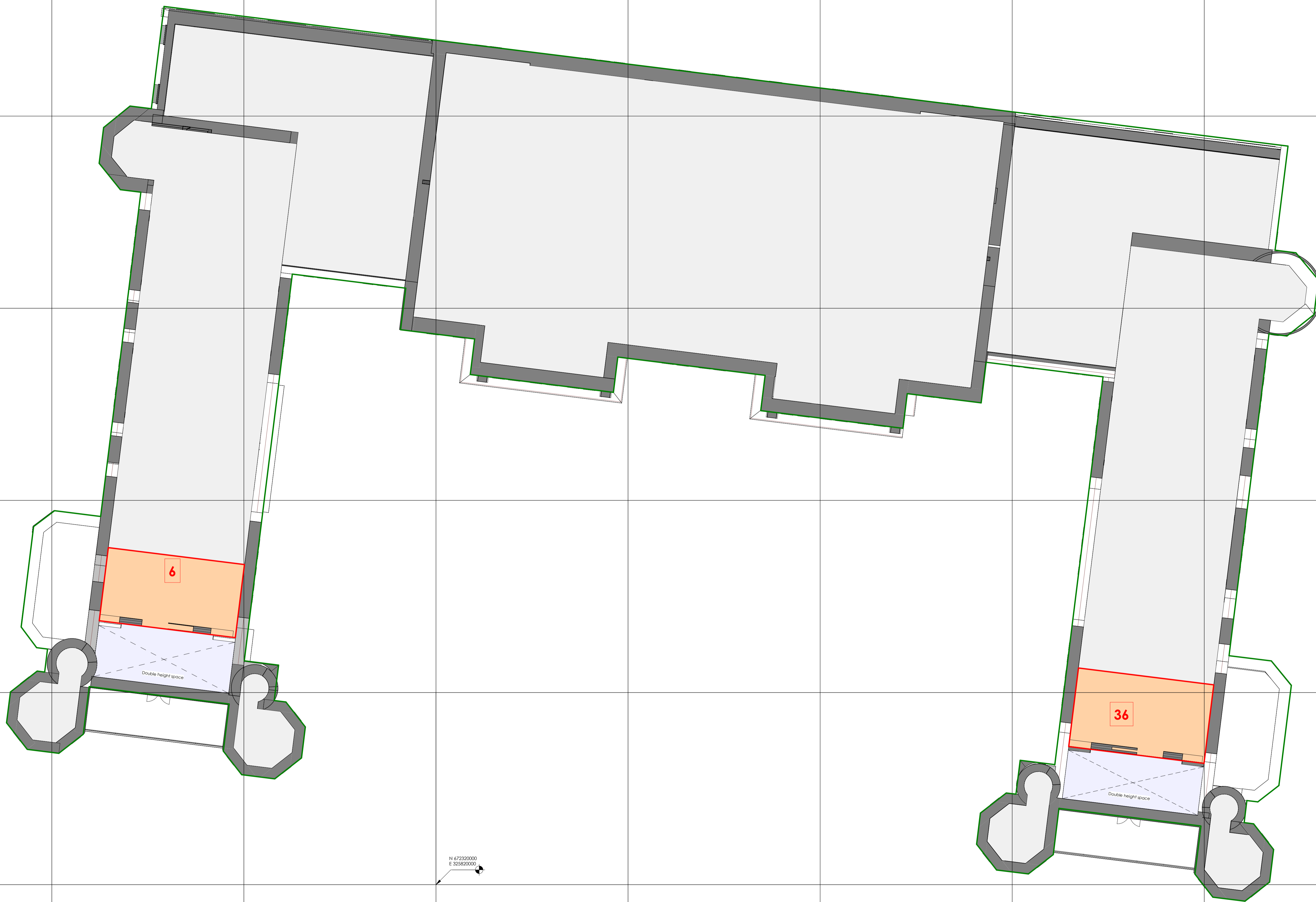
Date	Scale @ A1	Last Revision
07.02.24	1:100	13.03.24
Drawn By	Checked By	Revised By
AB	JC	JC

Drawing No.	Rev
22785-FJA-HB-02-DR-A-0055	P03

HB02

N 672320000  
E 325820000





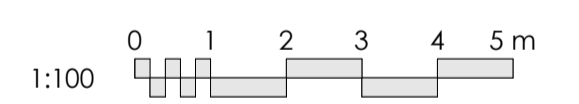
- Legend**
- Private plots
  - Private balconies
  - Private gardens / Terraces
  - Private cellar
  - Courtyard car parking space
  - Shared landscaping
  - Stair Common Parts
  - Plant room
  - Shared Parking Courtyard
  - Common footpath
  - Block boundary
  - Double height space
  - Area not included in the current floor plan view

- Notes**
- Gridlines imported from OS Map Licence number 100022432

P02	13.03.24	JC	Updated with S&C comments
P01	see dwg	-	Information issue
Rev	Date	By	Notes

### INFORMATION

- General Notes:**
- This drawing is copyright, reserved and remains the property of Fletcher Joseph Architects.
  - All levels and dimensions are to be checked on site by the contractor prior to fabrication, and any discrepancies must be reported immediately to the Architect.
  - All dimensions are to be read off this drawing and NOT scaled.
  - All work to be executed in strict accordance with the by-laws and regulations of the local authorities.
  - All work to conform to applicable codes of the British Standards.
  - Where indicated/required, all drawings are to be read in conjunction with all other documents issued by Fletcher Joseph and/or other professions.



**FLETCHER JOSEPH ASSOCIATES**  
Architects

5 Millar Place • Edinburgh • EH10 5HU  
T: 0131 447 5000  
E: admin@fletcherjoseph.com  
W: www.fletcherjoseph.com

Client  
**SQUARE & CRESCENT**

Project  
Royal Hospital for Sick Children

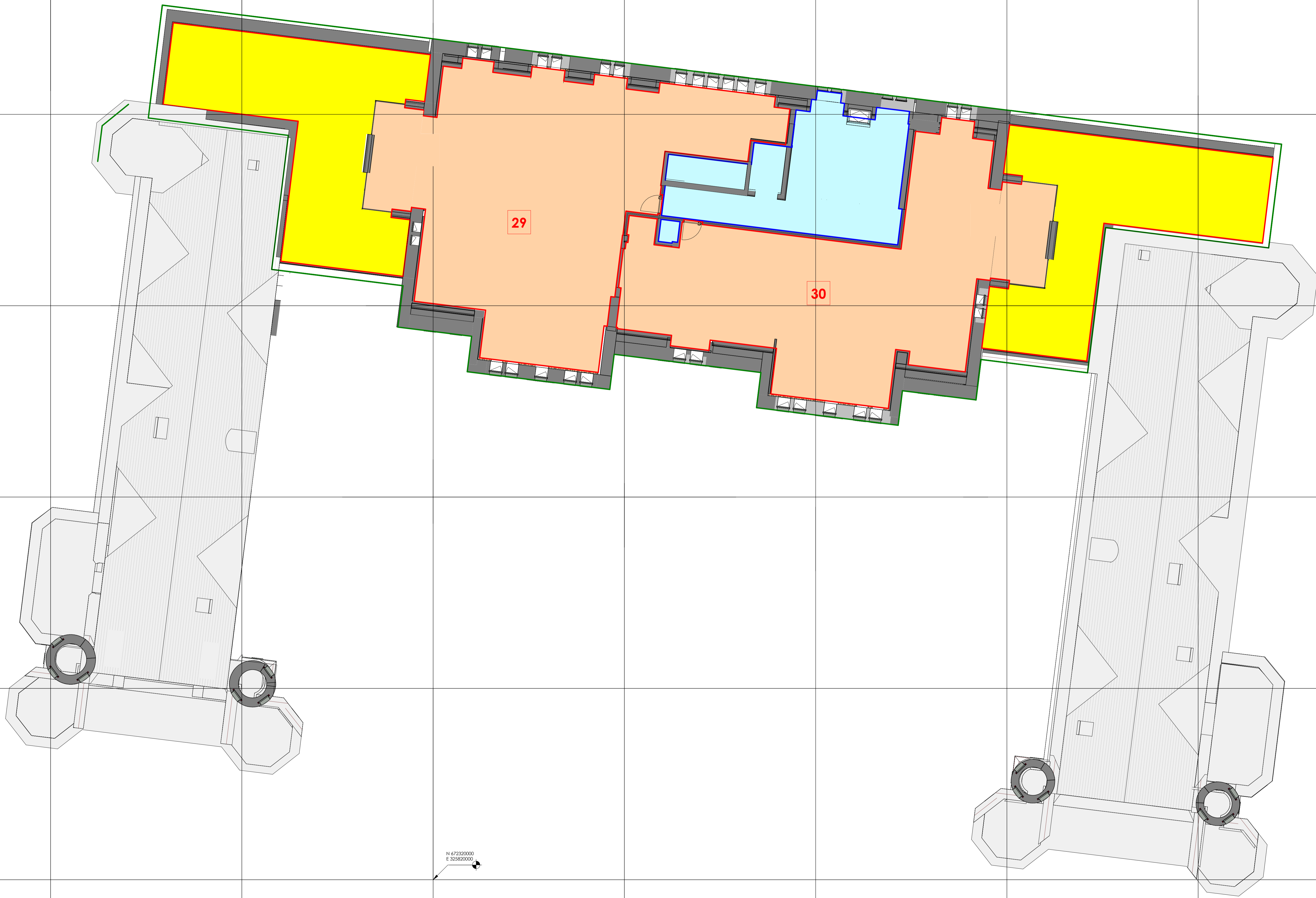
Title  
DPA plan -2nd Floor Mezzanine

Hospital Building (Lot 01)

Date	Scale @ A1	Last Revision
07.02.24	1:100	13.03.24
Drawn By	Checked By	Revised By
AB	JC	JC

Drawing No.	Rev
22785-FJA-HB-M2-DR-A-0056	P02

HBM2



- Legend**
- Private plots
  - Private balconies
  - Private gardens / Terraces
  - Private cellar
  - Courtyard car parking space
  - Shared landscaping
  - Stair Common Parts
  - Plant room
  - Shared Parking Courtyard
  - Common footpath
  - Block boundary
  - Double height space
  - Area not included in the current floor plan view

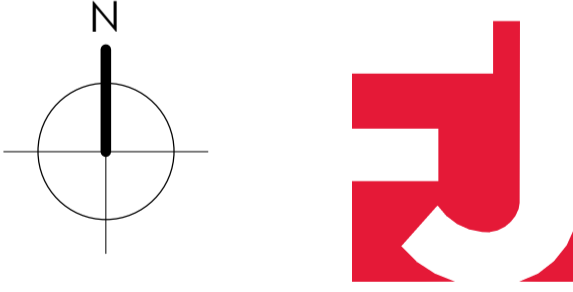
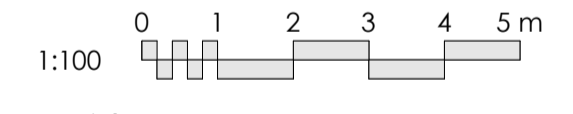
**Notes**

- Gridlines imported from OS Map Licence number 100022432

P03	13.03.24	JC	Updated with S&C comments
P02	19.02.24	JC	Updated as per BP comments
P01	see dwg	-	Information issue
Rev	Date	By	Notes

**INFORMATION**

- General Notes:**
- This drawing is copyright, reserved and remains the property of Fletcher Joseph Architects.
  - All levels and dimensions are to be checked on site by the contractor prior to fabrication, and any discrepancies must be reported immediately to the Architect.
  - All dimensions are to be read off this drawing and NOT scaled.
  - All work to be executed in strict accordance with the by-laws and regulations of the local authorities.
  - All work to conform to applicable codes of the British Standards.
  - Where indicated/required, all drawings are to be read in conjunction with all other documents issued by Fletcher Joseph and/or other professions.



**FLETCHER JOSEPH ASSOCIATES**  
Architects

5 Millar Place • Edinburgh • EH10 5HU  
T: 0131 447 5000  
E: admin@fletcherjoseph.com  
W: www.fletcherjoseph.com

Client  
**SQUARE & CRESCENT**

Project  
**Royal Hospital for Sick Children**

Title  
**DPA plan - 3rd Floor**

**Hospital Building (Lot 01)**

Date	Scale @ A1	Last Revision
07.02.24	1:100	13.03.24
Drawn By	Checked By	Revised By
AB	JC	JC
Drawing No.	Rev	
22785-FJA-HB-03-DR-A-0057	P03	

HB03

N 672320000  
E 325820000





- Legend**
- Private plots
  - Private balconies
  - Private gardens / Terraces
  - Private cellar
  - Courtyard car parking space
  - Shared landscaping
  - Stair Common Parts
  - Plant room
  - Shared Parking Courtyard
  - Common footpath
  - Block boundary
  - Double height space
  - Area not included in the current floor plan view

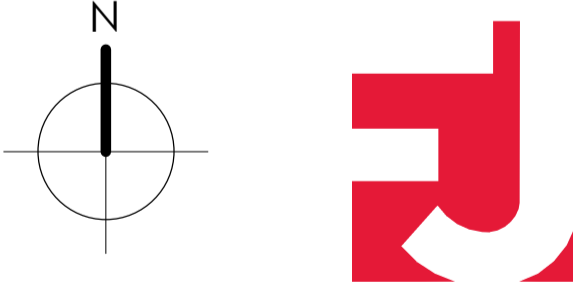
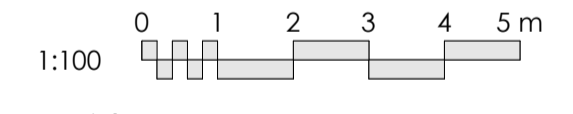
**Notes**

- Gridlines imported from OS Map Licence number 100022432

P03	13.03.24	JC	Updated with S&C comments
P02	19.02.24	JC	Updated as per BP comments
P01	see dwg	-	Information issue
Rev	Date	By	Notes

**INFORMATION**

- General Notes:**
- This drawing is copyright, reserved and remains the property of Fletcher Joseph Architects.
  - All levels and dimensions are to be checked on site by the contractor prior to fabrication, and any discrepancies must be reported immediately to the Architect.
  - All dimensions are to be read off this drawing and NOT scaled.
  - All work to be executed in strict accordance with the by-laws and regulations of the local authorities.
  - All work to conform to applicable codes of the British Standards.
  - Where indicated/required, all drawings are to be read in conjunction with all other documents issued by Fletcher Joseph and/or other professions.



**FLETCHER JOSEPH ASSOCIATES**  
Architects

5 Millar Place • Edinburgh • EH10 5HU  
T: 0131 447 5000  
E: admin@fletcherjoseph.com  
W: www.fletcherjoseph.com

Client  
**SQUARE & CRESCENT**

Project  
Royal Hospital for Sick Children

Title  
DPA plan - 4th Floor

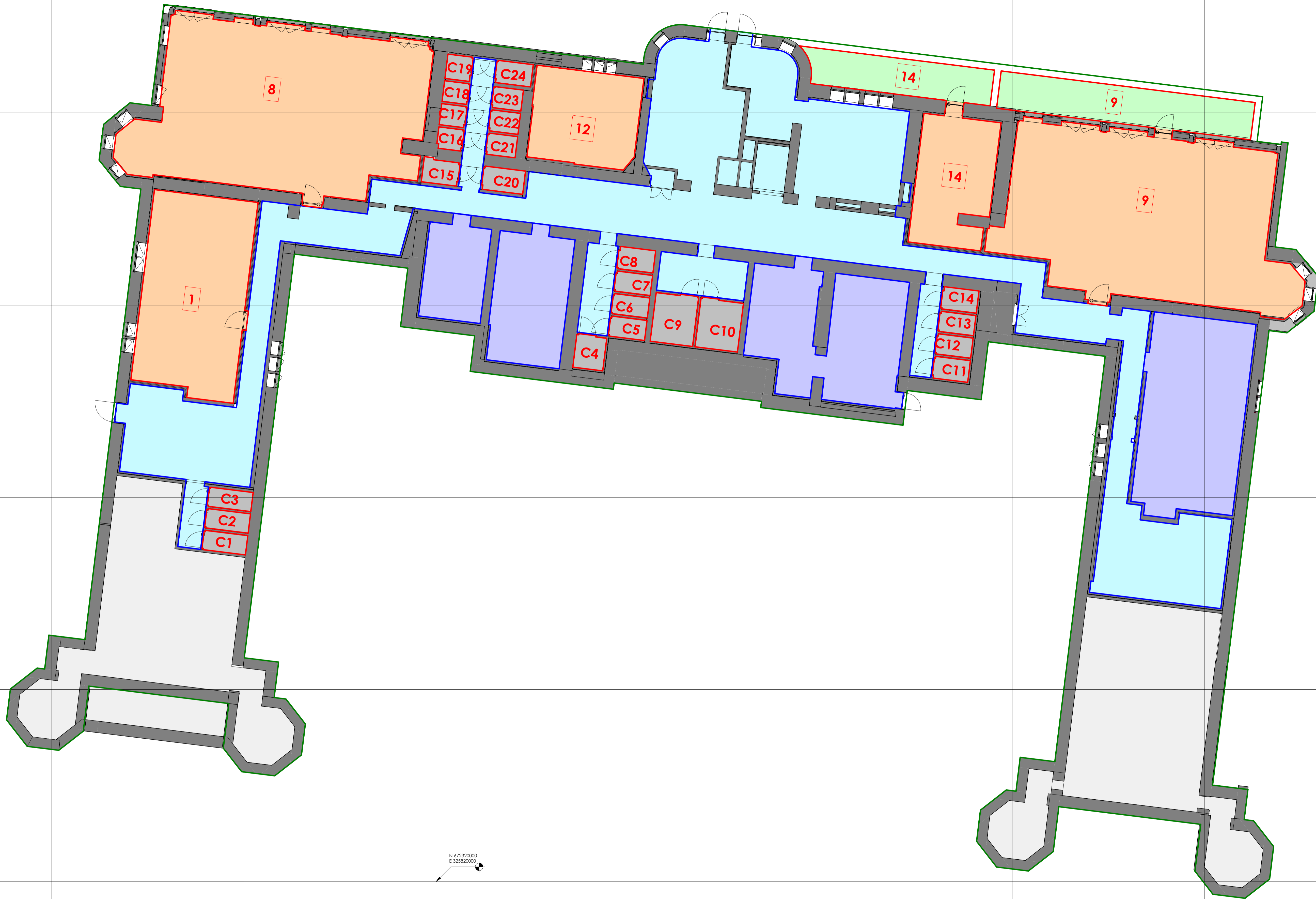
Hospital Building (Lot 01)

Date	Scale @ A1	Last Revision
07.02.24	1:100	13.03.24
Drawn By	Checked By	Revised By
AB	JC	JC
Drawing No.	Rev	
22785-FJA-HB-04-DR-A-0058	P03	

HB04



RILLBANK TERRACE



- Legend**
- Private plots
  - Private balconies
  - Private gardens / Terraces
  - Private cellar
  - Courtyard car parking space
  - Shared landscaping
  - Stair Common Parts
  - Plant room
  - Shared Parking Courtyard
  - Common footpath
  - Block boundary
  - Double height space
  - Area not included in the current floor plan view

**Notes**

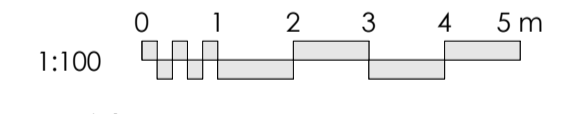
- Gridlines imported from OS Map Licence number 100022432

Rev	Date	By	Notes
P05	02.04.24	JC	Updated with Registers comments
P04	13.03.24	JC	Updated with S&C comments
P03	26.02.24	JC	Updated as per BP comments
P02	19.02.24	JC	Updated as per BP comments
P01	see dwg	—	Information issue

**INFORMATION**

**General Notes:**

- This drawing is copyright, reserved and remains the property of Fletcher Joseph Architects.
- All levels and dimensions are to be checked on site by the contractor prior to fabrication, and any discrepancies must be reported immediately to the Architect.
- All dimensions are to be read off this drawing and NOT scaled.
- All work to be executed in strict accordance with the by-laws and regulations of the local authorities.
- All work to conform to applicable codes of the British Standards.
- Where indicated/required, all drawings are to be read in conjunction with all other documents issued by Fletcher Joseph and/or other professions.



**FLETCHER JOSEPH ASSOCIATES**  
Architects

5 Millar Place • Edinburgh • EH10 5HU  
T: 0131 447 5000  
E: admin@fletcherjoseph.com  
W: www.fletcherjoseph.com

Client  
**SQUARE & CRESCENT**

Project  
Royal Hospital for Sick Children

Title  
DPA plan -Lower Ground Floor

Hospital Building (Lot 01)

Date	Scale @ A1	Last Revision
07.02.24	1:100	02.04.24
Drawn By	Checked By	Revised By
AB	JC	JC
Drawing No.	Rev	
22785-FJA-HB-LG-DR-A-0050	P05	

HBLG