

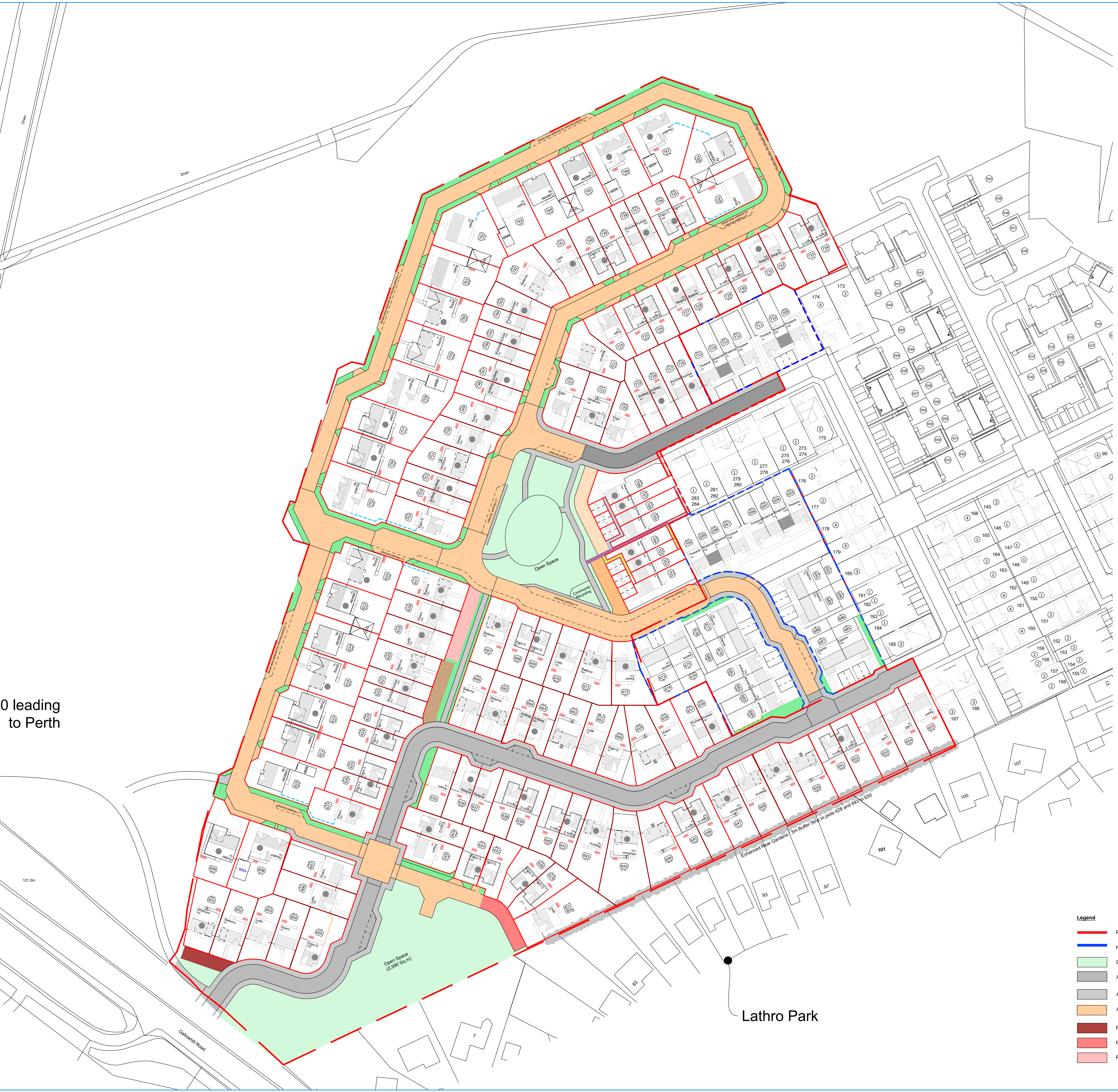
The Development registered under Title KNR4293 and plots 601 to 607, 617 to 619, 668, 704 to 708 and 716 to 754 within have been DPA approved.

The Keeper - 16/05/2024

Keeper for the Registers of Scotland

10 leading to Perth

121.3m



- Legend**
- Phase 2 Boundary
 - HA Boundary
 - Common Open Space adopted by PKC
 - Adoptable Road Asphalt finish
 - Adoptable Footpath Asphalt finish
 - Adoptable Road Surface
 - Private Access Road to be maintained by plots 601-602
 - Private Access Road to be maintained by plots 628-631
 - Private Access Road to be maintained by plots 617-619
 - Private Access Road to be maintained by plots 620-622
 - Private Access Road to be maintained by plots 701-704
 - Private Access Road to be maintained by plots 705-708
 - Indication of buffer 3m strip at plots 628 and 643 - 655
 - Shared footpath to be maintained by plots 701-708
 - Private Footpath to be maintained by 705 - 707
 - Private Footpath to be maintained by 702- 704
 - Factor maintained Open Space and Service Strips

REVISIONS

Rev 0 - 13.05.24	(K05)
Drawings moved as per plotwork drawings	
Rev 1 - 20.05.24	(K05)
Final reviewed from original - updated accordingly	
Rev 2 - 01.06.23	(K05)
Final DPA boundary update	
Rev 3 - 01.06.23	(K05)
General update to all boundaries	
Rev 4 - 06.06.23	(K05)
General update to all boundaries	
Rev 5 - 06.06.23	(K05)
General update to all boundaries	
Rev 6 - 06.06.23	(K05)
General update to all boundaries	
Rev 7 - 06.06.23	(K05)
General update to all boundaries	
Rev 8 - 06.06.23	(K05)
General update to all boundaries	
Rev 9 - 06.06.23	(K05)
General update to all boundaries	
Rev 10 - 06.06.23	(K05)
General update to all boundaries	
Rev 11 - 06.06.23	(K05)
General update to all boundaries	
Rev 12 - 06.06.23	(K05)
General update to all boundaries	
Rev 13 - 06.06.23	(K05)
General update to all boundaries	
Rev 14 - 06.06.23	(K05)
General update to all boundaries	
Rev 15 - 06.06.23	(K05)
General update to all boundaries	
Rev 16 - 06.06.23	(K05)
General update to all boundaries	
Rev 17 - 06.06.23	(K05)
General update to all boundaries	
Rev 18 - 06.06.23	(K05)
General update to all boundaries	
Rev 19 - 06.06.23	(K05)
General update to all boundaries	
Rev 20 - 06.06.23	(K05)
General update to all boundaries	
Rev 21 - 06.06.23	(K05)
General update to all boundaries	
Rev 22 - 06.06.23	(K05)
General update to all boundaries	
Rev 23 - 06.06.23	(K05)
General update to all boundaries	
Rev 24 - 06.06.23	(K05)
General update to all boundaries	
Rev 25 - 06.06.23	(K05)
General update to all boundaries	
Rev 26 - 06.06.23	(K05)
General update to all boundaries	
Rev 27 - 06.06.23	(K05)
General update to all boundaries	
Rev 28 - 06.06.23	(K05)
General update to all boundaries	
Rev 29 - 06.06.23	(K05)
General update to all boundaries	
Rev 30 - 06.06.23	(K05)
General update to all boundaries	
Rev 31 - 06.06.23	(K05)
General update to all boundaries	
Rev 32 - 06.06.23	(K05)
General update to all boundaries	
Rev 33 - 06.06.23	(K05)
General update to all boundaries	
Rev 34 - 06.06.23	(K05)
General update to all boundaries	
Rev 35 - 06.06.23	(K05)
General update to all boundaries	
Rev 36 - 06.06.23	(K05)
General update to all boundaries	
Rev 37 - 06.06.23	(K05)
General update to all boundaries	
Rev 38 - 06.06.23	(K05)
General update to all boundaries	
Rev 39 - 06.06.23	(K05)
General update to all boundaries	
Rev 40 - 06.06.23	(K05)
General update to all boundaries	
Rev 41 - 06.06.23	(K05)
General update to all boundaries	
Rev 42 - 06.06.23	(K05)
General update to all boundaries	
Rev 43 - 06.06.23	(K05)
General update to all boundaries	
Rev 44 - 06.06.23	(K05)
General update to all boundaries	
Rev 45 - 06.06.23	(K05)
General update to all boundaries	
Rev 46 - 06.06.23	(K05)
General update to all boundaries	
Rev 47 - 06.06.23	(K05)
General update to all boundaries	
Rev 48 - 06.06.23	(K05)
General update to all boundaries	
Rev 49 - 06.06.23	(K05)
General update to all boundaries	
Rev 50 - 06.06.23	(K05)
General update to all boundaries	
Rev 51 - 06.06.23	(K05)
General update to all boundaries	
Rev 52 - 06.06.23	(K05)
General update to all boundaries	
Rev 53 - 06.06.23	(K05)
General update to all boundaries	
Rev 54 - 06.06.23	(K05)
General update to all boundaries	
Rev 55 - 06.06.23	(K05)
General update to all boundaries	
Rev 56 - 06.06.23	(K05)
General update to all boundaries	
Rev 57 - 06.06.23	(K05)
General update to all boundaries	
Rev 58 - 06.06.23	(K05)
General update to all boundaries	
Rev 59 - 06.06.23	(K05)
General update to all boundaries	
Rev 60 - 06.06.23	(K05)
General update to all boundaries	
Rev 61 - 06.06.23	(K05)
General update to all boundaries	
Rev 62 - 06.06.23	(K05)
General update to all boundaries	
Rev 63 - 06.06.23	(K05)
General update to all boundaries	
Rev 64 - 06.06.23	(K05)
General update to all boundaries	
Rev 65 - 06.06.23	(K05)
General update to all boundaries	
Rev 66 - 06.06.23	(K05)
General update to all boundaries	
Rev 67 - 06.06.23	(K05)
General update to all boundaries	
Rev 68 - 06.06.23	(K05)
General update to all boundaries	
Rev 69 - 06.06.23	(K05)
General update to all boundaries	
Rev 70 - 06.06.23	(K05)
General update to all boundaries	
Rev 71 - 06.06.23	(K05)
General update to all boundaries	
Rev 72 - 06.06.23	(K05)
General update to all boundaries	
Rev 73 - 06.06.23	(K05)
General update to all boundaries	
Rev 74 - 06.06.23	(K05)
General update to all boundaries	
Rev 75 - 06.06.23	(K05)
General update to all boundaries	
Rev 76 - 06.06.23	(K05)
General update to all boundaries	
Rev 77 - 06.06.23	(K05)
General update to all boundaries	
Rev 78 - 06.06.23	(K05)
General update to all boundaries	
Rev 79 - 06.06.23	(K05)
General update to all boundaries	
Rev 80 - 06.06.23	(K05)
General update to all boundaries	
Rev 81 - 06.06.23	(K05)
General update to all boundaries	
Rev 82 - 06.06.23	(K05)
General update to all boundaries	
Rev 83 - 06.06.23	(K05)
General update to all boundaries	
Rev 84 - 06.06.23	(K05)
General update to all boundaries	
Rev 85 - 06.06.23	(K05)
General update to all boundaries	
Rev 86 - 06.06.23	(K05)
General update to all boundaries	
Rev 87 - 06.06.23	(K05)
General update to all boundaries	
Rev 88 - 06.06.23	(K05)
General update to all boundaries	
Rev 89 - 06.06.23	(K05)
General update to all boundaries	
Rev 90 - 06.06.23	(K05)
General update to all boundaries	
Rev 91 - 06.06.23	(K05)
General update to all boundaries	
Rev 92 - 06.06.23	(K05)
General update to all boundaries	
Rev 93 - 06.06.23	(K05)
General update to all boundaries	
Rev 94 - 06.06.23	(K05)
General update to all boundaries	
Rev 95 - 06.06.23	(K05)
General update to all boundaries	
Rev 96 - 06.06.23	(K05)
General update to all boundaries	
Rev 97 - 06.06.23	(K05)
General update to all boundaries	
Rev 98 - 06.06.23	(K05)
General update to all boundaries	
Rev 99 - 06.06.23	(K05)
General update to all boundaries	
Rev 100 - 06.06.23	(K05)
General update to all boundaries	

PROJECT TITLE

KINROSS Lathro Farm

DRAWING TITLE

DPA Layout Phase 2

SCALE	DATE	DRAWN
1:500 @A0	13/02/20	mtj
JOB NUMBER	DWG REFERENCE	REVISION
	LTH2-DOC-001	N

PERSIMMON HOMES NORTH SCOTLAND

Broden House
Broden Business Park
Lamberkine Drive
PERTH, PH1 1XA
Telephone: 01738 500820